

BUILDING A RESILIENT AND SAFE SUPPLY CHAIN

...utilizing technology

Presenters



Christian Winzeler, Principal
Microsoft Food & Beverage leader
christian.winzeler@rsmus.com

How do we build a resilient supply chain?



Building a resilient supply chain involves a comprehensive approach that covers several key areas:  

1. Risk Assessment: Conduct a thorough risk assessment of the entire supply chain to identify potential risks and vulnerabilities.
2. Diversification and Redundancy: Diversify suppliers, manufacturing sites, and transportation routes to reduce reliance on any single supplier or region. Build redundancy into the system, such as maintaining safety stock or identifying alternative suppliers and transportation routes.
3. Communication and Collaboration: Build strong relationships with suppliers and other stakeholders in the supply chain. Establish open communication channels, share information, and collaborate on risk mitigation and problem-solving.
4. Technology and Data: Leverage technology to improve visibility and transparency throughout the supply chain. Use data and analytics to identify risks and optimize performance.
5. Continuous Improvement: Establish a culture of continuous improvement and regularly review and update the supply chain strategy and risk mitigation plans.

Building a resilient supply chain is an ongoing process that requires ongoing investment and attention. By taking a comprehensive approach and regularly assessing and updating the supply chain strategy, businesses can build a more resilient and robust supply chain that can better withstand disruptions and unexpected events.

Resiliency is key



of respondents agree that having a resilient supply chain **positively impacts bottom line**.



believe having a modern and **fully integrated** digital infrastructure supporting the supply chain is **critical to business success**.

Data provided by Harvard Business Review Analytic Services commissioned by Microsoft

Today's challenges



feel their supply chain isn't flexible enough to adapt quickly to market demands.



have a single integrated platform of modern, best-in-class applications.

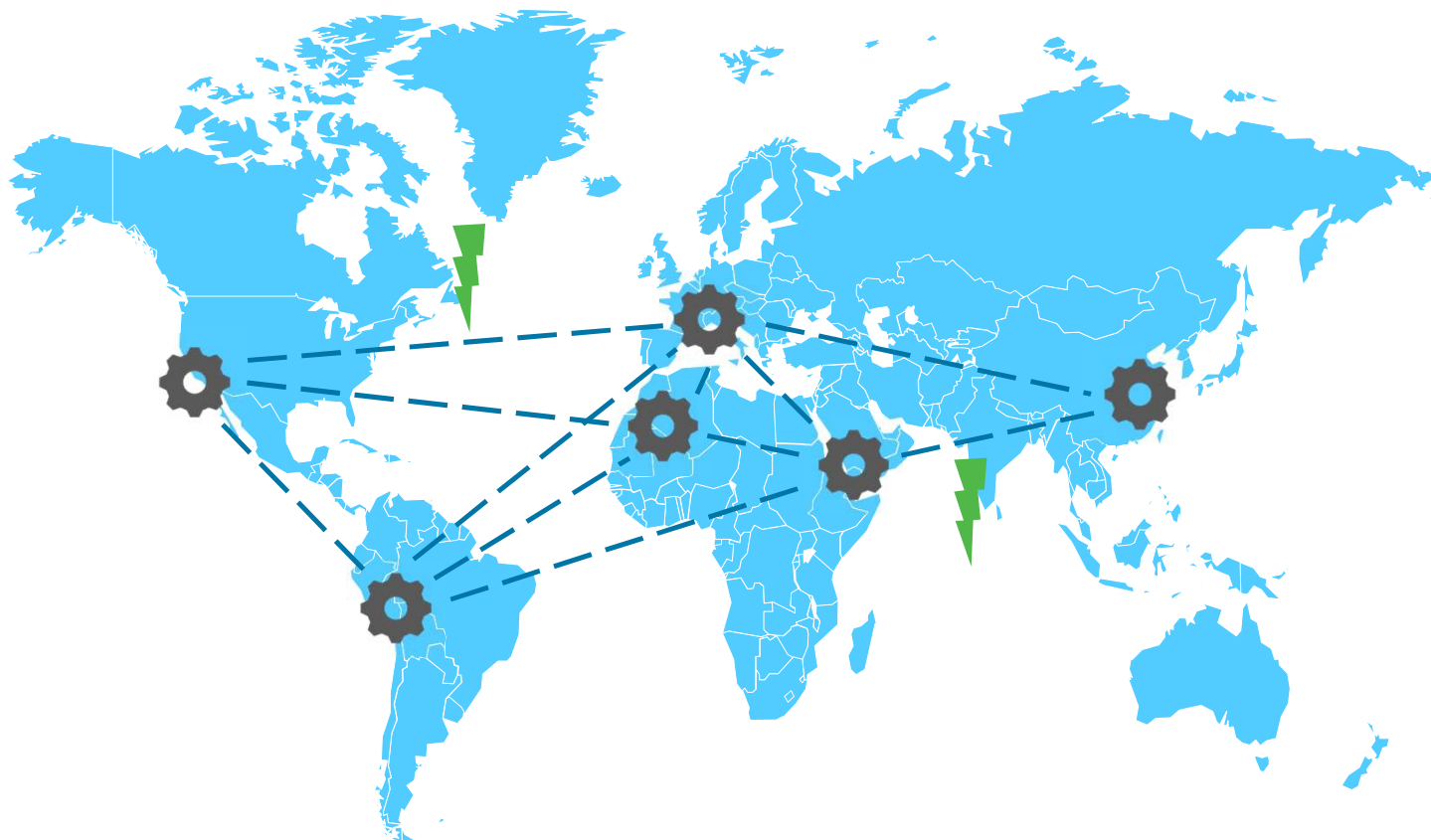


of executives cite lack of access to real-time supply chain data as a technology obstacle.



How did we get here?







Disconnected
processes



Layered
planning



Excess
inventory



Reactive
execution

Organizational system landscape

Systems of engagement

EDI
eCommerce
CRM
Marketplaces



Systems of execution

ERP
WMS
TMS



Systems of planning

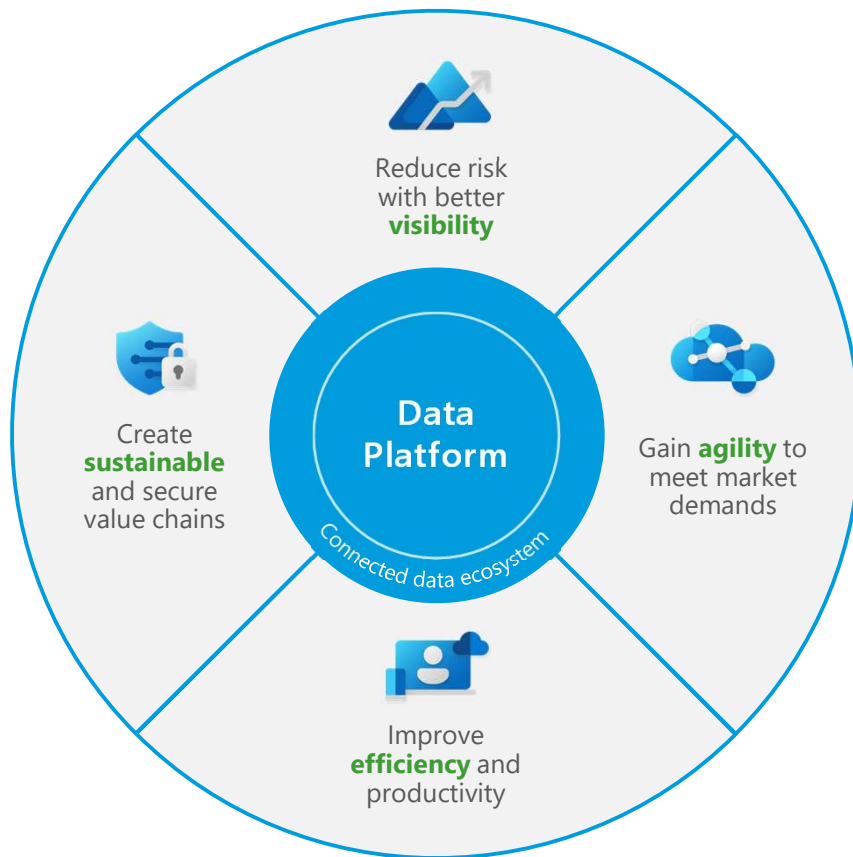
Demand
Supply
S&OP process



Customers
Vendors
Logistics
Other 3rd parties

News
Markets
Weather
Regulations





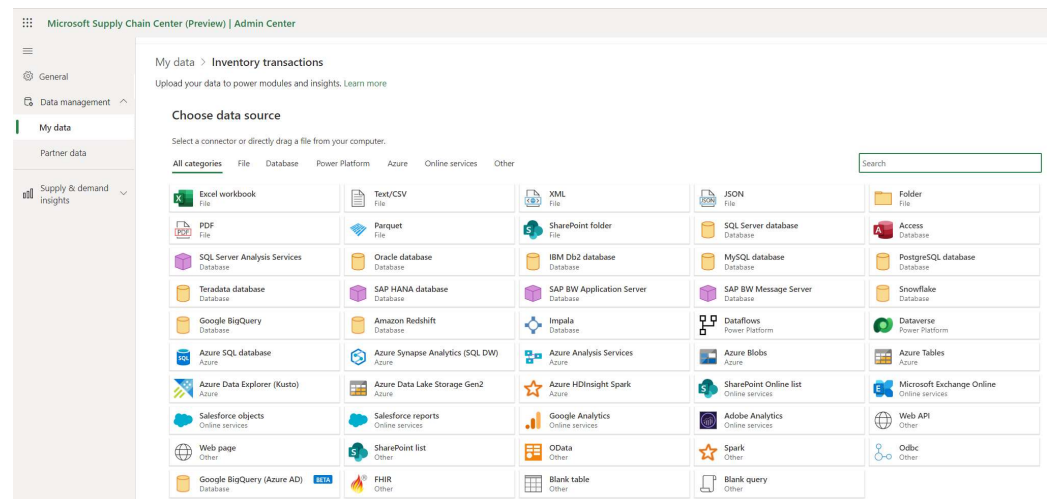
Build a strong data foundation and create an intelligent data platform

Simplify your processes and focus on value-add

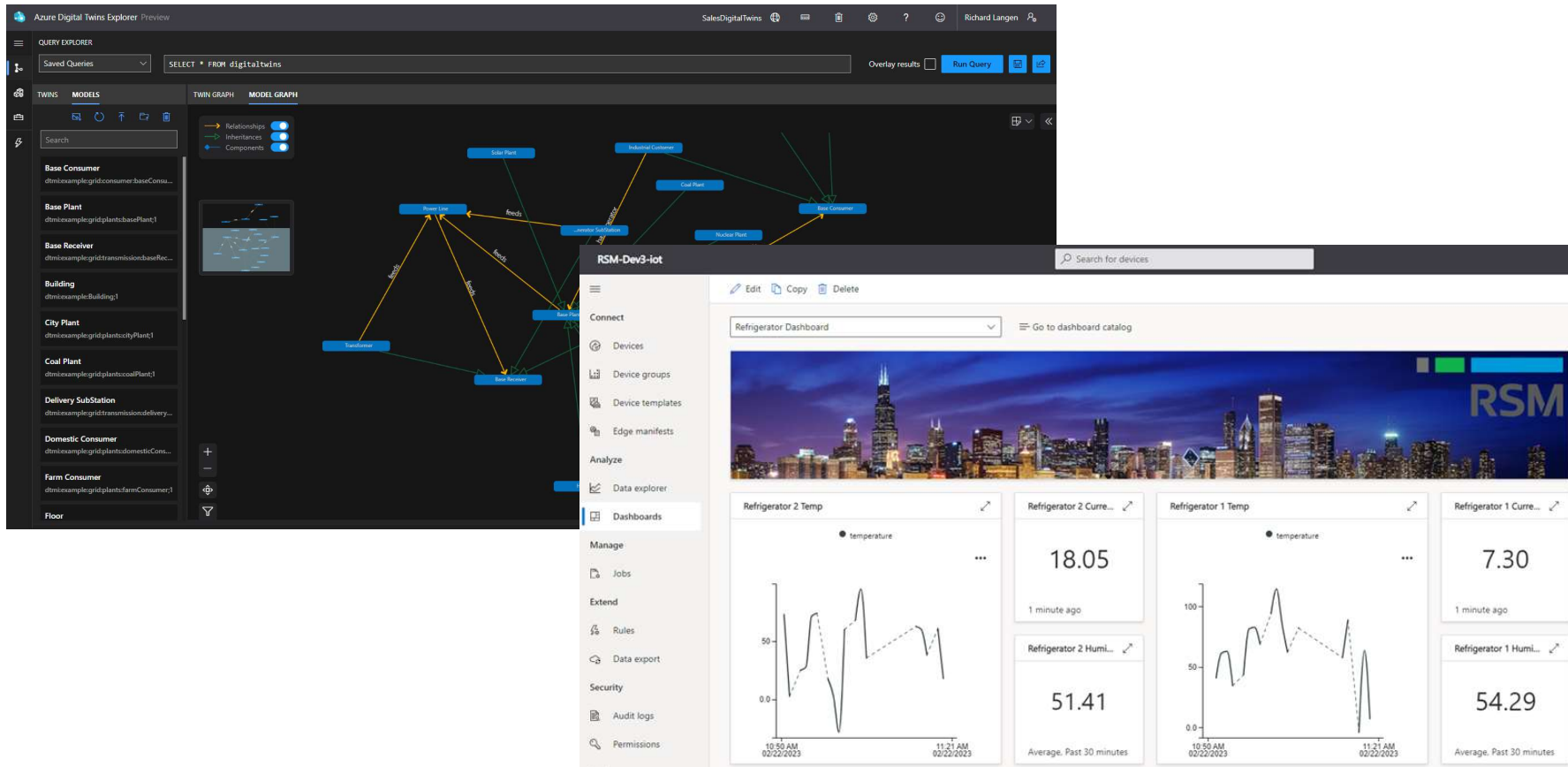
Strategize around the right modularity of your supply chain

Build a connected supply chain

- > Build a supply chain platform that is connected through an open, extensible and adaptive framework
- > Streamline interactions across planning and execution system with a centralized data hub
- > Build a predictive and pro-active business model utilizing AI



Build a connected supply chain

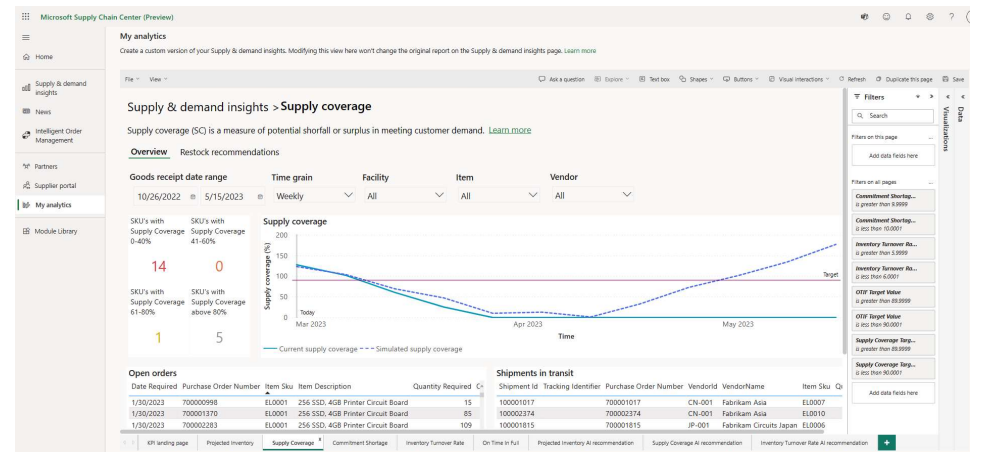
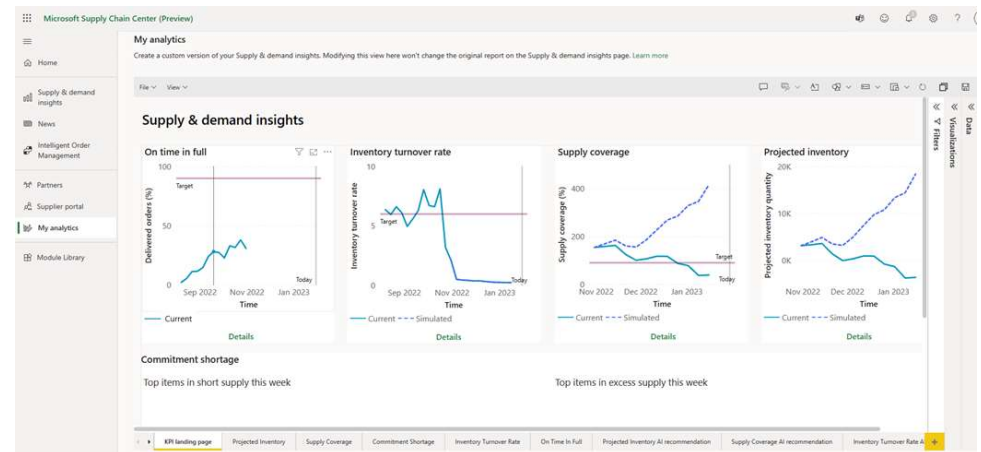


Reduce risk with better visibility

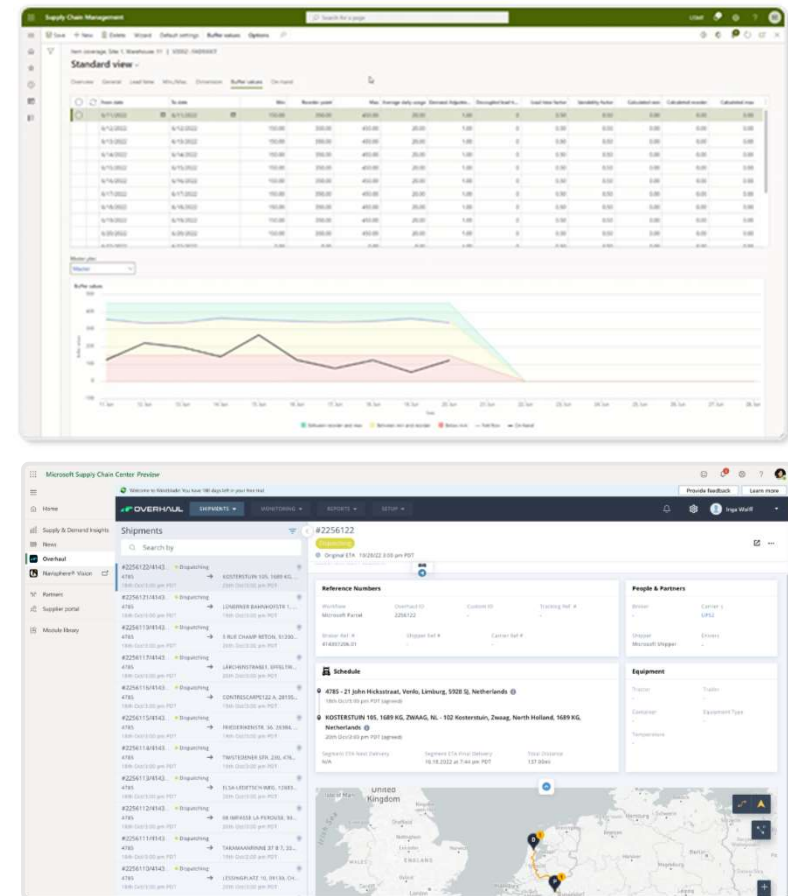
- > Predict supplier constraints by gaining visibility into their supply chains
- > Improve forecast accuracy with machine learning
- > Predict stock-outs with real time inventory visibility and AI powered analytics
- > Act on recommended actions in a collaborative manner to mitigate risk



prevedere

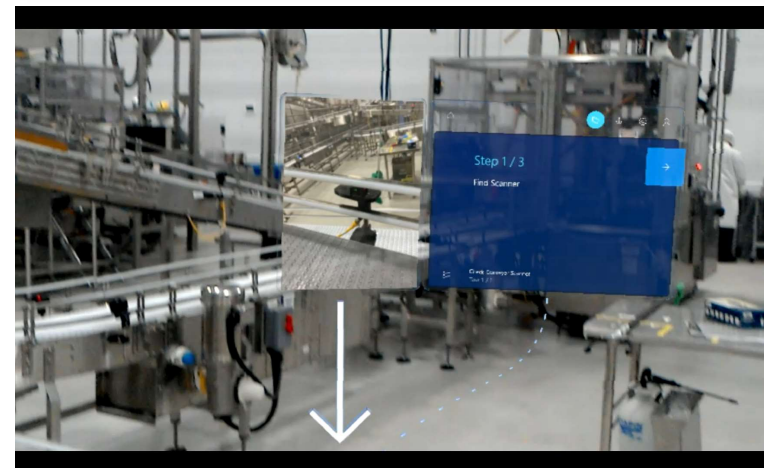
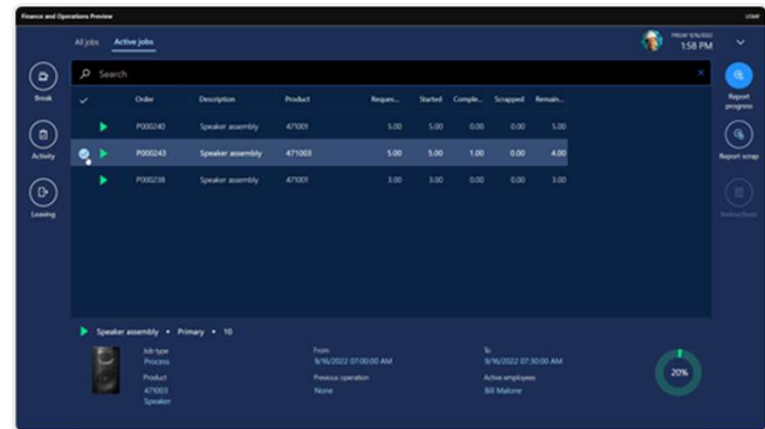


- 
- Microsoft Dynamics 365 Supply Chain Management
- Microsoft Teams
- Power Platform
- Microsoft Supply Chain Center
- Azure
- Office



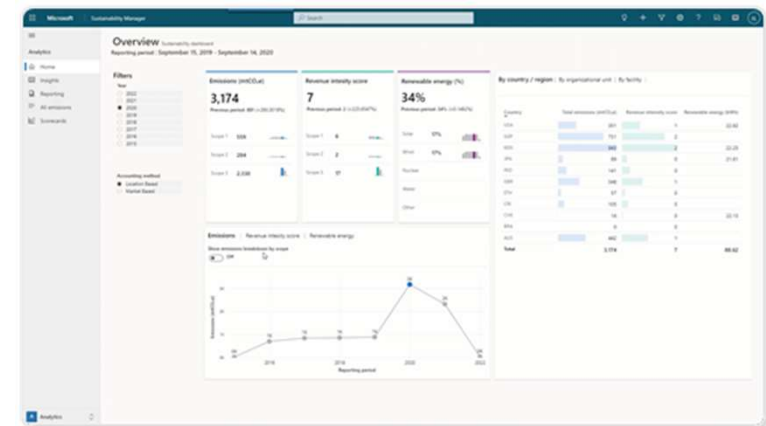
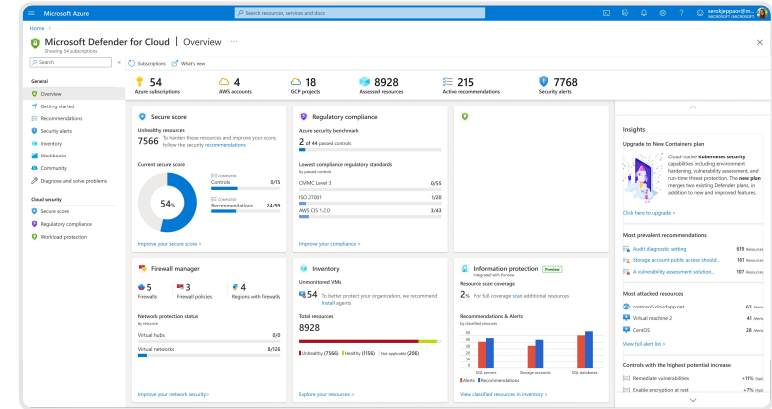
Improved efficiency and productivity

- > Prevent costly failure and improve asset productivity with predictive maintenance
- > Enhance warehouse productivity with robotics, easy to use mobile app and embedded performance analysis dashboards
- > Improve production floor execution with modern interfaces, connected assets and embedded Teams collaboration
- > Accelerate upskilling with holographic work instructions



Create secure and sustainable value chains

- > Record, report and reduce carbon emissions with pre-configured dashboards
- > Fulfill order sustainably with a rules-based orchestration engine
- > Create a secured supply chain by improving physical, endpoint, and cyber security



Microsoft Cloud
for Sustainability



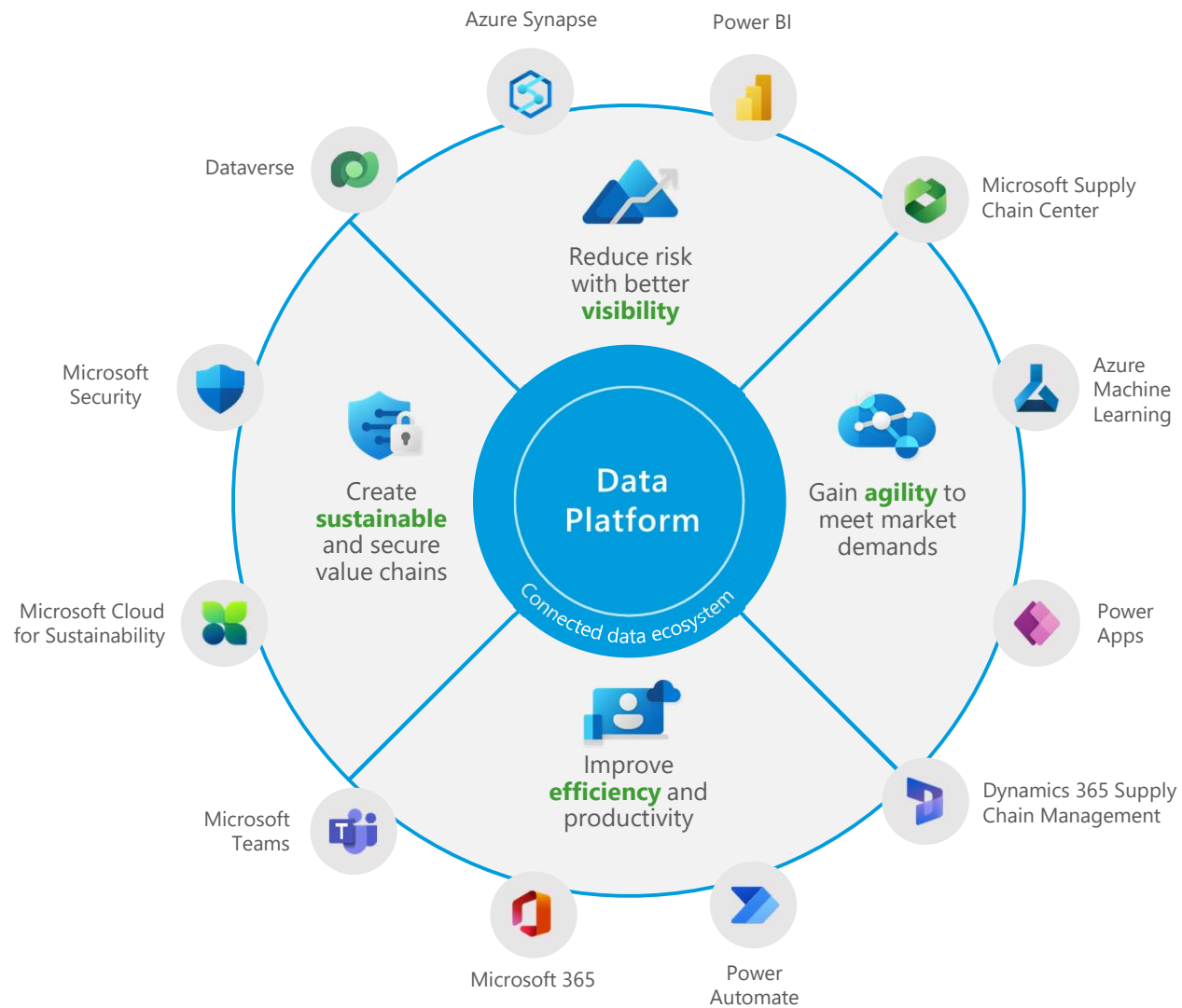
Microsoft
Security



Microsoft
Supply Chain
Center



Intelligent
Order
Management



Business value

Create a predictive supply chain

Up to
90%
improvement
in OEE

Up to
3%
improvement in plant
reliability

Up to
65%
increase in labor
efficiency

Unlock your revenue potential while reducing costs

Up to
30%
reduced expediting
expenses

\$16B
consumer goods
company with 100,000
order lines/month
over 5 years

\$1.5B
in increased
revenue from
improved customer
experience

Build an empowered workforce

\$2.3B
in reduced expenses
from optimizing
fulfillment and
returns

Up to
35%
Reduction in inventory¹

\$1.5B
increase in planner
efficiency¹

Produce and operate sustainably

Up to
50%
increase in energy
efficiency¹

Up to
5-10%
reduction in
waste/scrap¹

Up to
\$1.5B
reduction in energy
cost¹

¹ Build a Resilient Supply Chain, IBISWorld

Organizational system landscape

Systems of engagement

EDI
eCommerce
CRM
Marketplaces



Systems of execution

ERP
WMS
TMS



Systems of planning

Demand
Supply
S&OP process

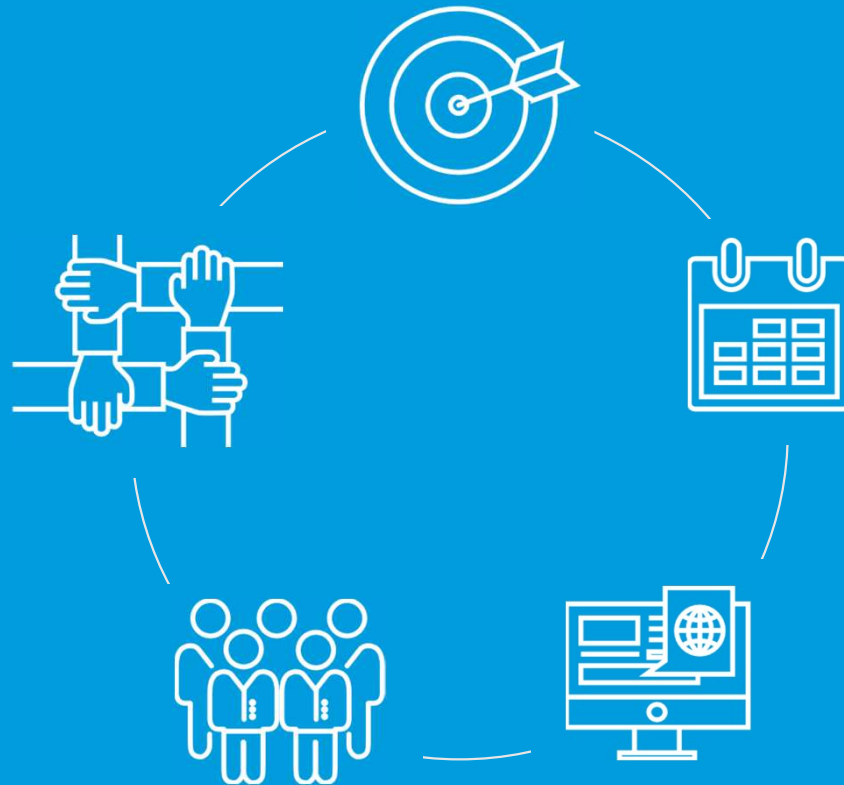


Customers
Vendors
Logistics
Other 3rd parties

News
Markets
Weather
Regulations



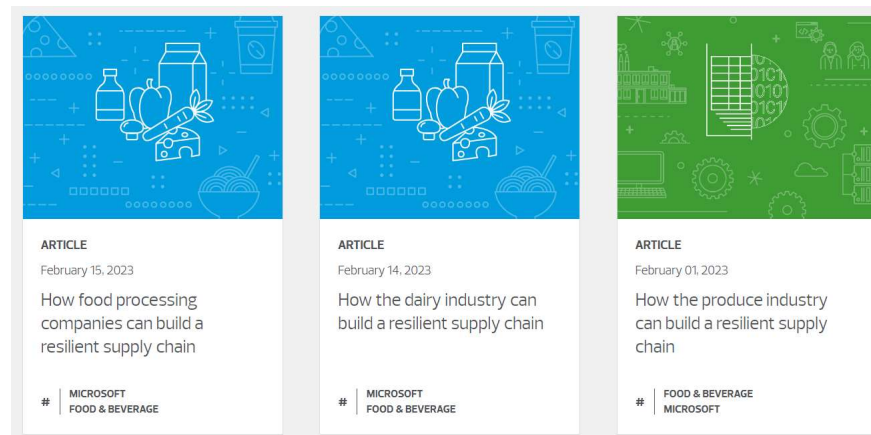
Become part of a resilient and safe supply chain





THANK YOU
FOR YOUR TIME
AND ATTENTION

Learn more at
rsmus.com/insights/industries/food-beverage.html



Questions?

christian.winzeler@rsmus.com