

# MICROSOFT DYNAMICS GP CLOUD ERP OPTIONS – TAKING A LOOK AT SAGE INTACCT

THE POWER OF BEING UNDERSTOOD  
AUDIT | TAX | CONSULTING



# Agenda

- RSM – Who We Are
- RSM Sage Intacct Practice Overview
- Sage Intacct Overview, Highlights, & Differentiators
- Sage Intacct Partnerships
- Sage Intacct Industry Focus
- Use GP Today? Why Consider Sage Intacct?
- Customer Story

## Your Presenter

### John Szuberla, CPA

Director, Technology Consulting  
Sage Intacct National Practice Leader

[John.Szuberla@rsmus.com](mailto:John.Szuberla@rsmus.com)

312 634 3783

#### Experience:

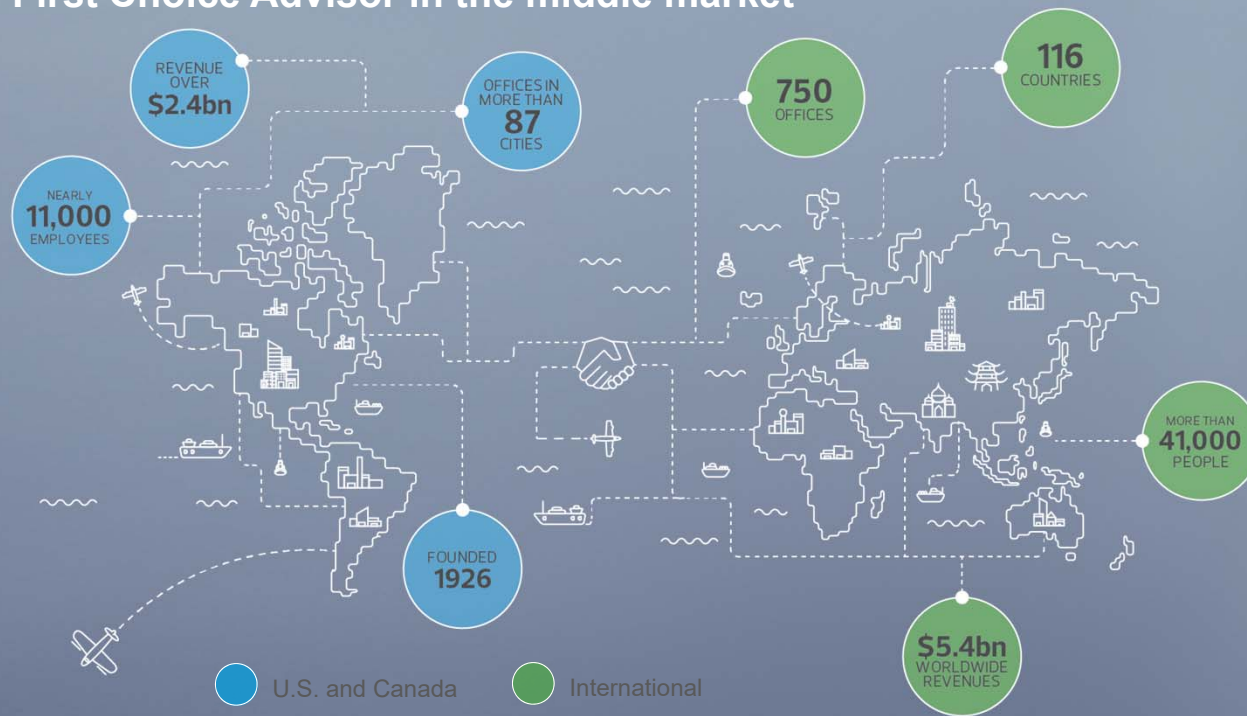
- 25 years of professional services experience in the fields of accounting, information technology, and project management
- 20+ years in Microsoft Dynamics GP channel
- Previously a director at a global technology services firm leading a Microsoft practice spanning Dynamics GP, Dynamics CRM, SharePoint, custom development, business intelligence and analytics, and project management initiatives



# RSM – WHO WE ARE

# RSM overview

Fifth largest audit, tax and consulting firm in the U.S.  
First Choice Advisor in the middle market



\* RSM US LLP is a limited liability partnership and the U.S. member firm of RSM International, a global network of independent audit, tax and consulting firms. The member firms of RSM International collaborate to provide services to global clients, but are separate and distinct legal entities that cannot obligate each other. Each member firm is responsible only for its own acts and omissions, and not those of any other party. Visit [rsmus.com/aboutus](http://rsmus.com/aboutus) for more information regarding RSM US LLP and RSM International.

© 2020 RSM US LLP. All Rights Reserved.



# RSM consulting overview

**194** partners/  
principals



Leading provider of **technology, risk, financial, transaction and business consulting services - incorporating deep industry expertise** - to middle market leaders



**\$597M**  
in revenue  
in FY19

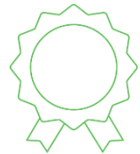
**2,300+**  
clients



More than **3,000**  
consulting professionals



**600+**  
private equity and  
portfolio clients



One of the largest  
**Microsoft Gold Partners**  
in the U.S.

**More than 16%**  
compound annual  
growth rate (CAGR)  
over the past five years

6 years in a row  
Consulting Magazine  
**Best Firms to Work For**  
recipient



**46 languages**  
are spoken by  
RSM Consulting  
professionals



Member of the  
**Institute of Internal Auditors**  
Principal Partner Program



**#1 NetSuite**  
consulting partner  
in the U.S.

# RSM SAGE INTACCT PRACTICE OVERVIEW



RSM has been ranked 1<sup>st</sup> in the annual VAR 100 List for 5 consecutive years!

**Top Channel Partners  
Achieve Membership in the  
2019 Sage Intacct  
President's Club**





## 10+ YEARS

Length of RSM and Sage Intacct Partnership

3

Time recipient of Sage Intacct President's Club Award

300

RSM Clients using Sage Intacct across FAO and VAR

4

RSM has been named Partner of the Month 4x in last year

## 8 US markets

National team with Certified Consultants and teams in 8 major US cities

# RSM Sage Intacct Team – Current Locations

sage Intacct



# SAGE INTACCT OVERVIEW, HIGHLIGHTS, & DIFFERENTIATORS

1999

Founded and “Born in the Cloud”

15,000

Worldwide Sage Intacct customers

Forbes Cloud 100

Definitive list of the top 100 private cloud companies

#1 Customer Satisfaction

G2 Crowd 98 of 100 rating, higher than any other ERP vendor

AICPA

**ONLY** Preferred Provider

# Sage Intacct – Best-in-Class ERP



**#1 Visionary product** for our customers

**1,500,000** daily transactions by a top customer

**3,000+** users by a top customer

**660** entities by a top customer



choice of financial and strategic partners

**award-winning**    **25 Best Small Biz Apps**  
[www.intacct.com/awards](http://www.intacct.com/awards)

**150+** 3rd party partner ecosystem  
[www.intacct.com/marketplace](http://www.intacct.com/marketplace)

**Top Tech IPOs** last four years run on Intacct

## Sage Intacct – Recognized for Finance Leadership by Experts

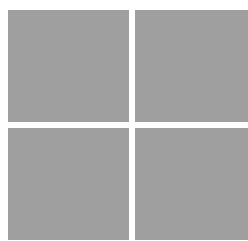
sage Intacct



Preferred  
Provider



#1  
Customer  
Satisfaction



Gartner  
Research

Visionary  
Cloud Financial  
Management



Exclusive  
Partner



Preferred  
Financials ISV  
Partner

# Only Sage Intacct is preferred by the AICPA

sage Intacct



The AICPA “wrote the book” on accounting

## General Product - P&L by Entity (% of Sales)

[Filter](#) [Print](#) [Excel](#) [Email](#)

P&L by Entity (% of Sales)

	Texas Year To Date 12/31/2017		California Year To Date 12/31/2017		Maine Year To Date 12/31/2017		Florida Year To Date 12/31/2017		All Locations Year To Date 12/31/2017	
	% of Sales		% of Sales		% of Sales		% of Sales		% of Sales	
► Sales	466,296		217,069		451,432		240,818		1,375,615	
► Cost Of Sales	98,144	0.21	0	0.00	0	0.00	45,000	0.19	143,144	0.10
▼ General And Administrative										
Benefits- Health Insurance	9,000	0.02	9,000	0.04	9,000	0.02	9,000	0.04	36,000	0.03
Office Expense- Internal Services	1,188	0.00	1,800	0.01	630	0.00	979	0.00	4,497	0.00
Office Expense- Rent	53,100	0.11	35,800	0.16	54,400	0.12	29,600	0.12	172,900	0.13
Professional Fees- Other Services	10,000	0.02	0	0.00	0	0.00	0	0.00	10,000	0.01
Utilities- Electric	5,400	0.01	6,000	0.03	3,600	0.01	3,000	0.01	18,000	0.01
Utilities- Telephone	2,200	0.00	2,400	0.01	2,200	0.00	1,000	0.01	8,400	0.01
Total General And Administrative	80,968	0.17	55,000	0.25	69,850	0.15	44,579	0.19	250,397	0.18
▼ Net Income										
Sales	466,296	1.00	217,069	1.00	451,432	1.00	240,818	1.00	1,375,615	1.00
Cost Of Goods Sold	(98,144)	(0.21)	0	0.00	0	0.00	(45,000)	(0.19)	(143,144)	(0.10)
Benefits- Health Insurance	(9,000)	(0.02)	(9,000)	(0.04)	(9,000)	(0.02)	(9,000)	(0.04)	(36,000)	(0.03)
Office Expense- Internal Services	(1,188)	(0.00)	(1,800)	(0.01)	(630)	(0.00)	(979)	(0.00)	(4,497)	(0.00)
Office Expense- Rent	(53,100)	(0.11)	(35,800)	(0.16)	(54,400)	(0.12)	(29,600)	(0.12)	(172,900)	(0.13)
Professional Fees- Other Services	(10,000)	(0.02)	0	0.00	0	0.00	0	0.00	(10,000)	(0.01)
Utilities- Electric	(5,400)	(0.01)	(6,000)	(0.03)	(3,600)	(0.01)	(3,000)	(0.01)	(18,000)	(0.01)
Utilities- Telephone	(2,200)	(0.00)	(2,400)	(0.01)	(2,200)	(0.00)	(1,000)	(0.01)	(8,400)	(0.01)
Total Net Income	287,184	0.62	162,069	0.75	381,582	0.85	151,239	0.63	982,014	0.71

Of all the systems reviewed, only Sage Intacct is preferred

# #1 in Customer Satisfaction for Years

sage Intacct



- Since 2015, compared to other cloud accounting peers, Sage Intacct had **highest scores** on:
  - Satisfaction
  - Product Direction
  - Net Promoter Score

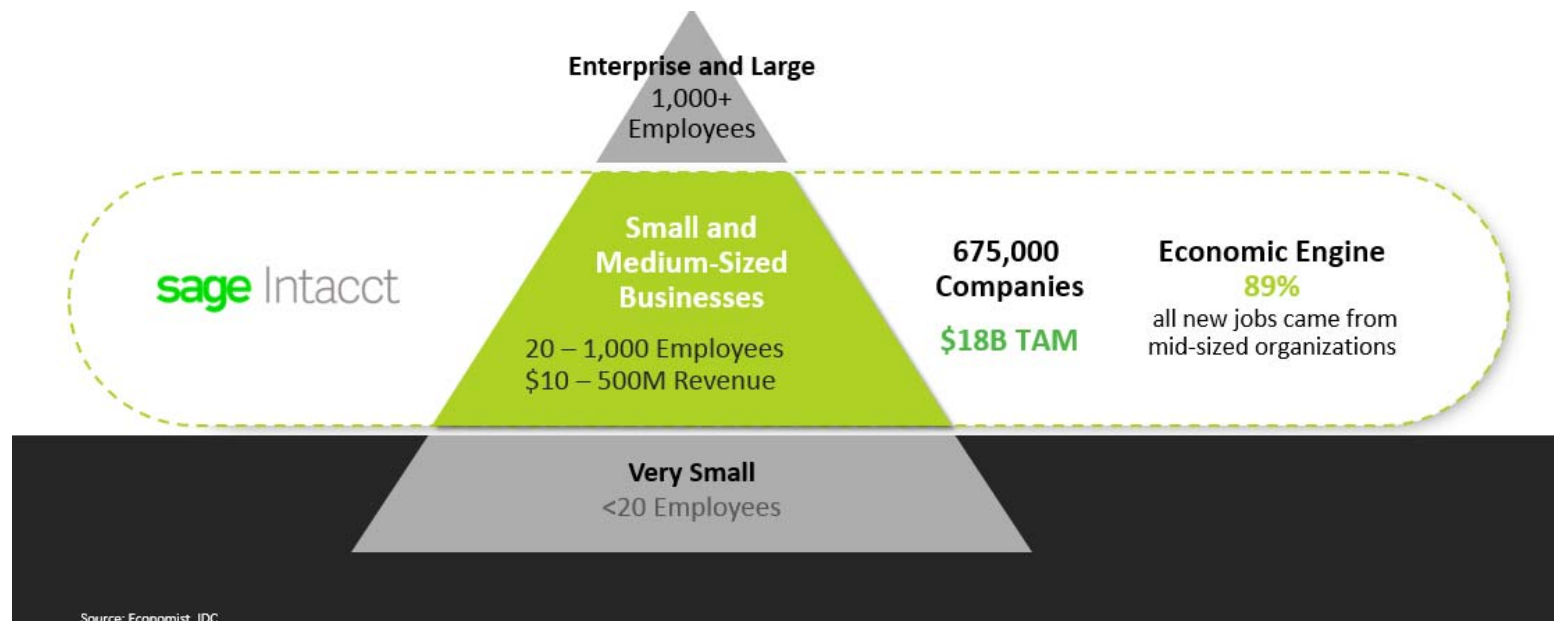
Based on 2,000+ independent, verified reviews

[G2 Mid Market Accounting Software Customer Satisfaction](#)



# Sage Intacct – Exclusive Focus on the SMB Market

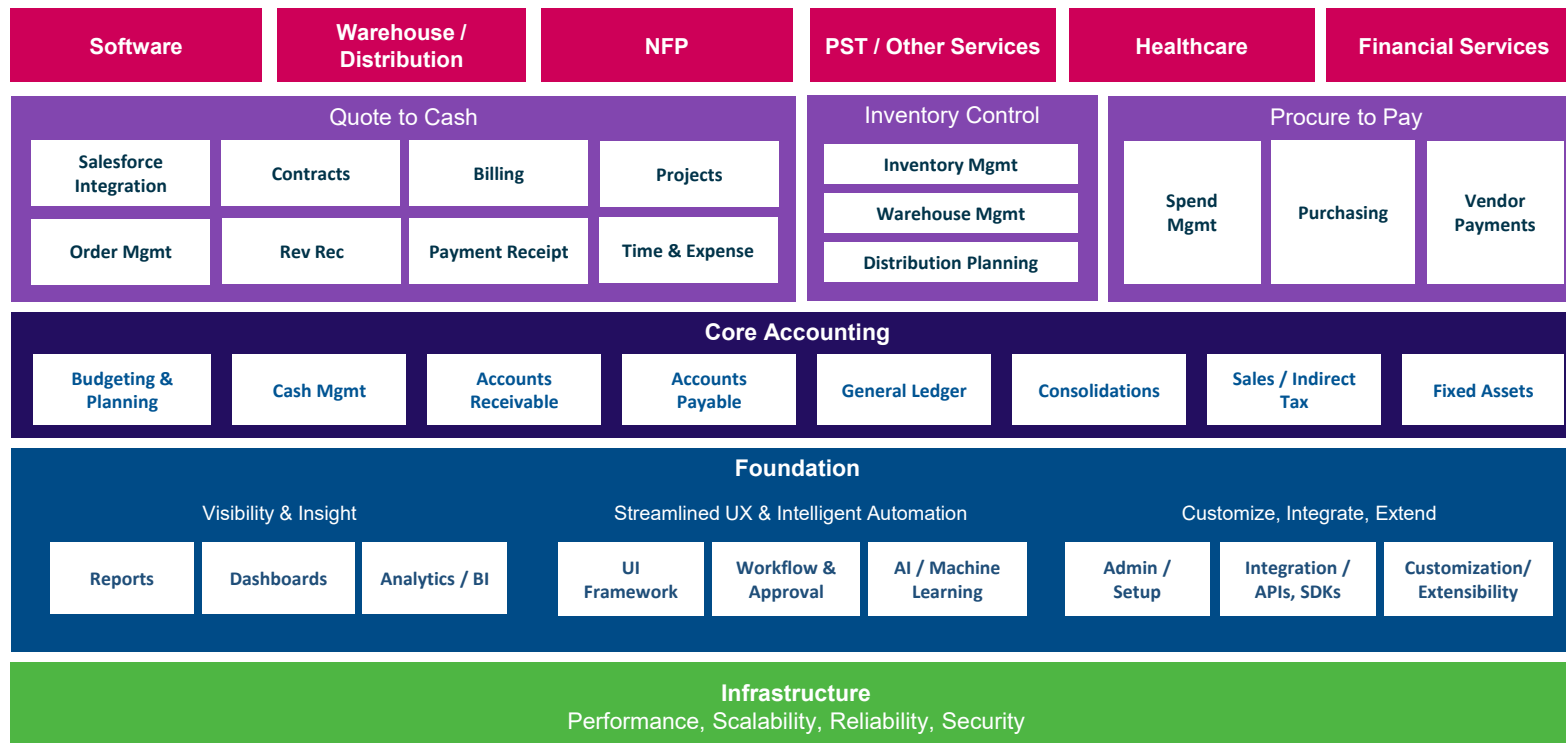
sage Intacct



Source: Economist, IDC

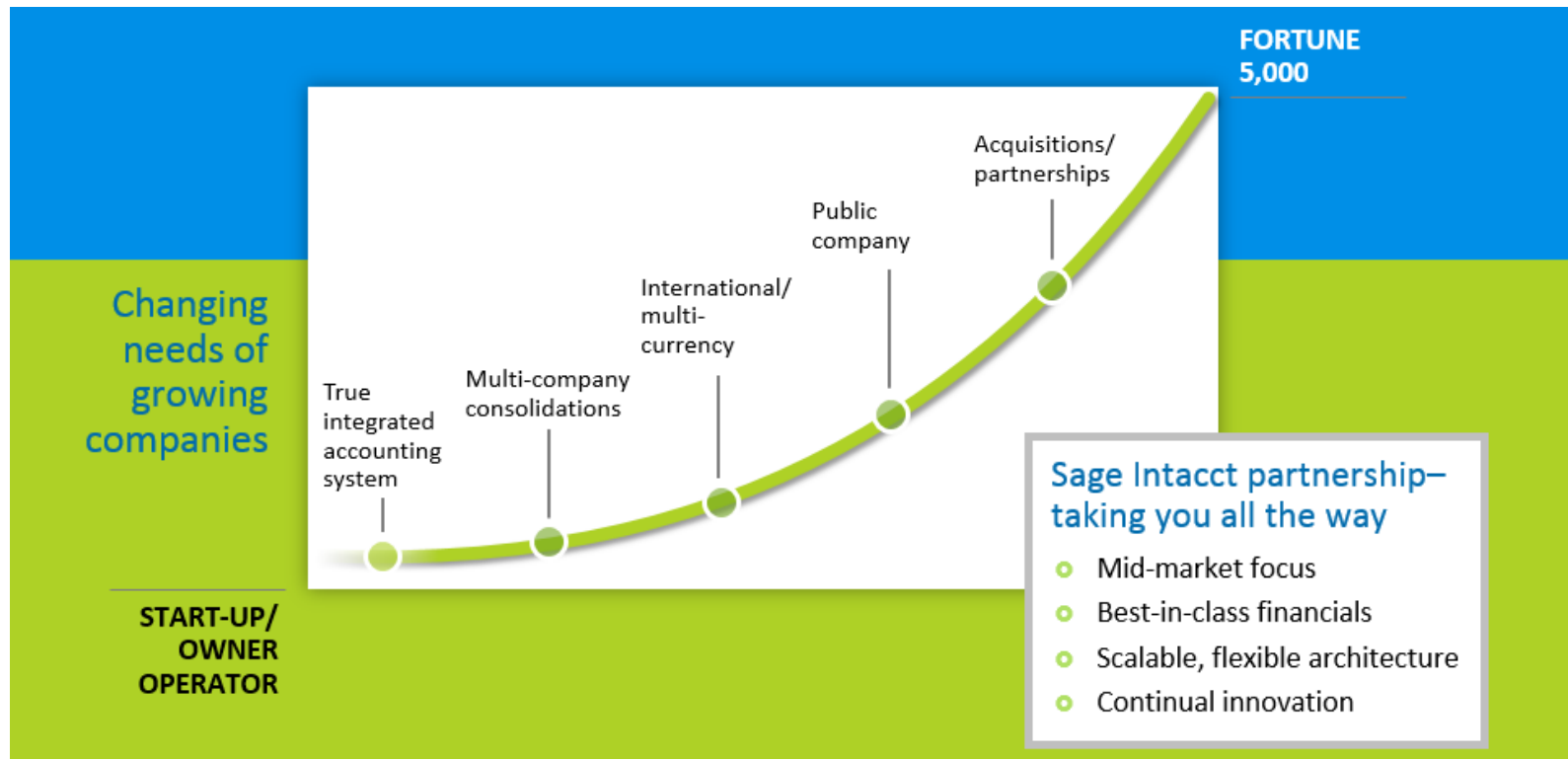
# Modern Cloud Financial Management Platform

sage Intacct



# Flexibility for Growth

sage Intacct



# A modern cloud financial management solution for multi-entity businesses

sage Intacct



**Multi-entity insight  
through dynamic  
dashboards**



**Continuous  
multi-entity  
consolidations**



**Streamlined  
processes across  
all entities**



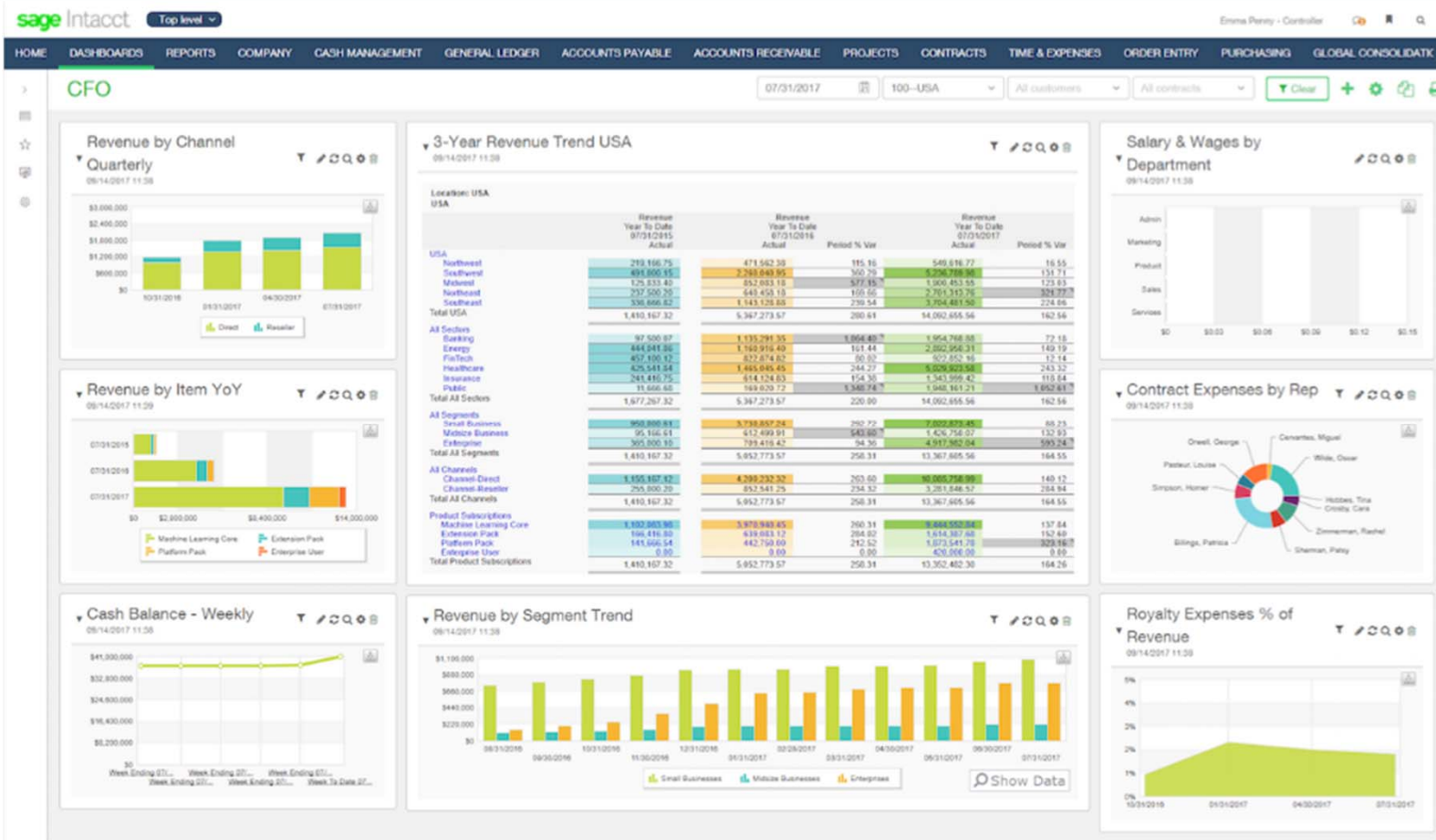
**Planning and  
budgeting for  
growth**



**Best-in-class modern cloud platform**

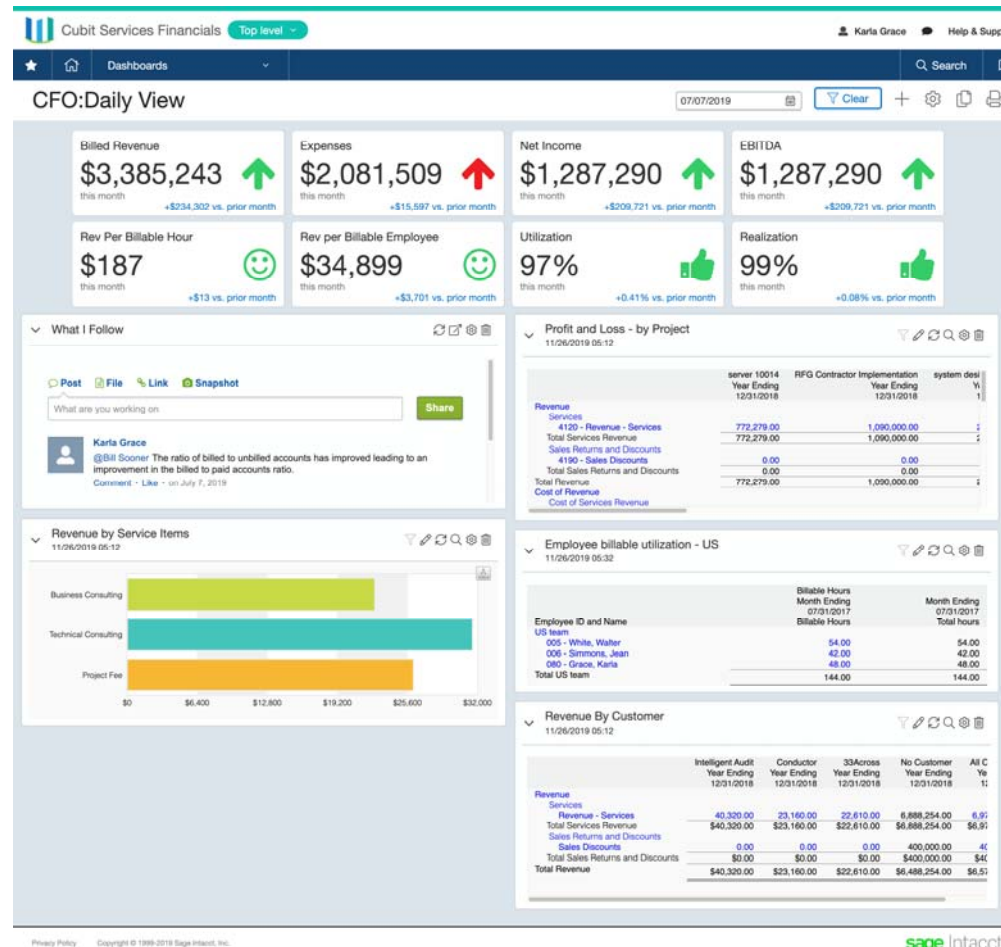
# Multi-entity insight through dynamic dashboards

sage Intacct



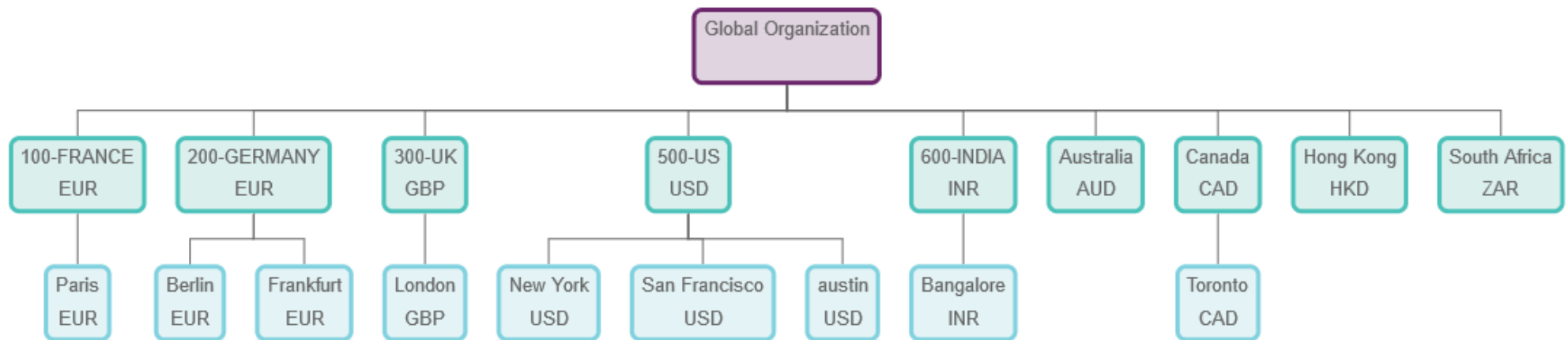
# Multi-entity insight through dynamic dashboards

sage Intacct



# Continuous multi-entity consolidations

sage Intacct



# Streamlined business process across all entities

sage Intacct

The screenshot displays the Sage Intacct user interface for the 'Order Entry' module. At the top, a navigation bar includes links for HOME, DASHBOARDS, REPORTS, COMPANY, GENERAL LEDGER, ORDER ENTRY (which is highlighted), ACCOUNTS RECEIVABLE, and ACCOUNTS PAYABLE. The user's name, 'winifer cheng', is visible in the top right corner. The main content area is titled 'Order Entry' and is organized into three sections: Data, Tasks, and Reports. The 'Data' section contains icons for Customers, Warehouses, Product lines, Items, and Price lists. The 'Tasks' section features a central workflow diagram with four steps: 'Create a sales quote', 'Create a sales order', 'Fulfill an order', and 'Create a sales invoice', connected by green arrows. Below this flow are three additional task icons: 'Split / merge transactions', 'Print/ email transactions', and 'Create a return or credit'. The 'Reports' section includes icons for 'Standard reports' and 'My reports'. A left-hand sidebar contains various utility icons for navigation and settings.



# Plan and budget for growth

sage Intacct



Full budgeting and planning functionality



Deployed in days, fast time to value



Easy-to-use and maintain



Seamless data flow with financials

The diagram illustrates Sage Intacct as a central hub for various business systems. At the center is a blue circle containing the Sage Intacct logo, a group of three stylized human figures, and five green stars. Four dotted green lines radiate from this central circle to four light blue clouds, each representing a different business function:

- CRM:** Contains logos for Salesforce and Microsoft Dynamics CRM.
- Planning:** Contains logos for b360, Prophix, hostanalytics, and Adaptive Insights.
- Any system:** A cloud with no specific logos, representing integration with any existing system.
- AP Automation:** Contains logos for Avidxchange, Coupa, MineralTree, Bill.com, ANYBILL, Yoco, Paramount, and WorkPlace.

Below the central circle, the text "Sage Intacct is the central hub for your business systems" is displayed.

*Don't risk vendor lock-in and settle for an all-in-one suite that may not be the best solution in every department for your organization*

# SAGE INTACCT PARTNERSHIPS

# Sage Intacct Partnerships for Customers' Success

sage Intacct

<b>CRM</b>    	<b>Budgeting &amp; Planning</b>        	<b>Payments &amp; Billing</b>        	<b>HR &amp; Payroll</b>          	<b>Project Management</b>      	<b>AP Automation</b>         
<b>Field Service Management</b>     	<b>Inventory &amp; Manufacturing</b>       	<b>Document Management</b>        	<b>Tax Management</b>   	<b>Asset Management</b>  	<b>Contract Management</b>   
<b>Business Management</b>         	<b>Time, Expense, Travel, &amp; Attendance</b>          	<b>Nonprofit</b>    	<b>Restaurant Management</b>    	<b>Checks &amp; Supplies</b>   	<b>EDI &amp; Ecommerce/POS</b>      

150+ Marketplace partners

75% of Sage Intacct customers integrate with 2+ partners

<https://marketplace.intacct.com/>

- **About the Sage Intacct Marketplace** – The Sage Intacct Marketplace offers a variety of the most innovative cloud solutions. All built to be best in class. All built to integrate with Sage Intacct from day one.
- **Something for everyone** – Make it easier for your business to manage subscriptions, point of sale, payroll, projects, and more. If someone in your business needs it, you will probably find it in the Sage Intacct Marketplace. Robust Sage Intacct integration helps your data automatically flow into your financials, giving you a single place to get your full financial picture.
- **Future-proof your business** – If your business requirements change in the future, no problem. Unlike suite solutions, Sage Intacct lets you maintain your freedom to choose what is right for your business, when it is right for your business. Just visit the Sage Intacct Marketplace whenever you need to extend your Sage Intacct ecosystem.
- **Let's go shopping** – Simply search for solutions by industry, business need or keyword. Find your favorites, and request for more information.

# SAGE INTACCT INDUSTRY FOCUS

# Sage Intacct – Key Verticals

sage Intacct

## Software and SaaS



- Security
- Artificial Intelligence
- Healthcare IT
- Marketing IT

## NFP



- Human Services
- Community Dev & Capacity Building
- Education
- International Relief
- Nonprofit Healthcare
- Membership/Mutual Benefit
- Faith-based

## Professional Services



- HR – Staffing Services
- IT Consulting – Managed Services
- Marketing & Advertising – Digital Marketing Agency

# Sage Intacct – Key Verticals

sage Intacct

## Financial Services



- Single Family Office
- Multi-Family Office
- Asset Management
- REIT
- Private Equity

## Healthcare



- Multi-location Assisted Living
- Skilled Nursing
- Multi-office Doctor's Practices
- Multi-office Dental Practices

## Hospitality



- Quick service restaurant/franchise
- Hotel/resort
- Health club/fitness center

## Wholesale Distribution



- QuickBooks graduates
- Legacy on-premise switchers



# Ideal Industry Profiles

sage Intacct

## Non-Profit

- Org structure
  - Multiple entities & locations
  - Multiple grants and donors
- Processes & Reporting are key
  - Fund accounting
  - Statements of Activities, Financial Position, Cash Flows; Form 990
  - Revenue Recognition
  - Spend Management
  - NFP Board Book Powered by GuideStar
- Technology environment: Best in class
  - AMS
  - Donor Management
  - Fundraising

## Software & Technology

- Org structure: Growth, expansion
  - Potential for multi-entity, international
  - Internal PS/Implementation team
  - Growth-stage and PE-funded
- Process Automation & Reporting are key
  - Salesforce integration, Contracts, Subscription Billing, Revenue Recognition and Accounting
  - Reporting and real-time visibility – SaaS metric dashboards with CAC, CLTV, CMRR, Gross Churn, Customer Churn
  - Scalability for future growth
- Technology environment: Best in class
  - Salesforce
  - PSA
  - Homegrown billing/operational system

## Professional Services

- Org structure: Growth, complex
  - Potential for multi-entity, locations, international
  - High growth
  - Multiple business units
- Process Automation & Project Reporting are keys
  - Multiple billing rates: T&E/Firm Fixed/Milestone
  - Track costs, time, expenses
  - Project profitability, utilization
- Technology environment: Best in class
  - Salesforce CRM
  - PSA solution

## Financial Services

- Org structure: Growth, expansion
  - Potential for multi-entity, locations, international
  - Various assets under management
  - Ability to quickly add new entities
- Reporting & Consolidation are keys
  - Use best-in-class, multi-dimensional reporting that deliver real-time insights across multi-entities
  - Unlimited multi-dimensions
  - Reduce consolidations time
- Technology environment: Best in class
  - Advanced BI & Analytics
  - Corporate Performance Management solutions

# Ideal Industry Profiles

sage Intacct

## Hospitality

- Org structure: Growth, expanding
  - Multi-entity
  - Adding locations / High # of locations
- Process Automation & Reporting are keys
  - Automation – Intercompany, consolidations, external systems
  - Real-time visibility & reporting
  - Scalability for new locations
- Technology environment: Best in class
  - POS integration
  - Procure to Pay Automation

## Healthcare

- Org structure: Growth, expanding
  - Multi-entity
  - Adding locations / High # of locations
- Process Automation & Consolidation are keys
  - Automation – Intercompany, consolidations, external systems
  - Real-time visibility & reporting
  - Scalability for new locations
- Audit Trail and GAAP Compliance/HIPAA Compliance
- Technology environment: Best in class
  - EMR/EHR integration
  - Procure to Pay Automation

USE GP TODAY?  
WHY CONSIDER SAGE INTACCT?

# Dimensional COA Structure



## Multi-Dimensional

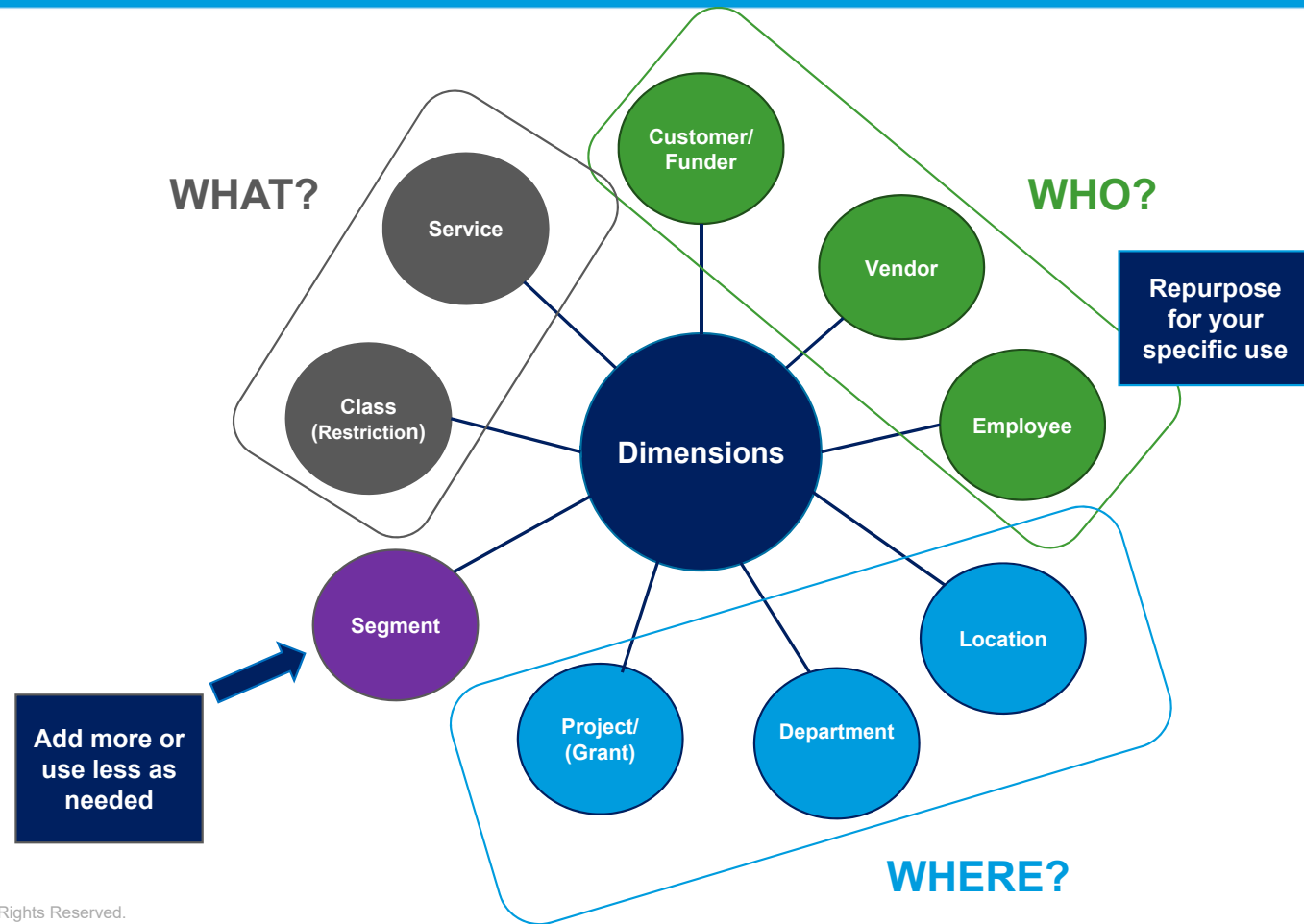
- Dimensions replace sub-accounts or segments often found in other accounting systems
- Dimensions simplify the Chart of Accounts
- Transactions are coded to one account with multiple dimensions
- Without dimensions you have a proliferation of accounts/sub accounts to handle entity or departmental reporting

Natural Account 60000000 Salary & Wages	+	Segments				=	Acct	Ent	Dpt	Title
		Entity	Department		60000000-0010-100		60000000	- Boston Diner - Kitchen		
		E0010	Boston Diner	100	Kitchen		60000000-0010-200	60000000	- Boston Diner - Bar	
		E0012	Somerville Spa	200	Bar		60000000-0010-300	60000000	- Boston Diner - Management	
		E0014	Burlington Bistro	300	Management		60000000-0012-100	60000000	- Somerville Spa - Kitchen	
		E0016	Weymouth Waters				60000000-0012-200	60000000	- Somerville Spa - Bar	
		E0018	Reading Ratatouille				60000000-0012-300	60000000	- Somerville Spa - Management	
		E0020	Melrose Meals				60000000-0014-100	60000000	- Burlington Bistro - Kitchen	
		E0022	Lowell Lake Lane				60000000-0014-200	60000000	- Burlington Bistro - Bar	
		E0024	Arlington Alley				60000000-0014-300	60000000	- Burlington Bistro - Management	
				60000000-0016-100	60000000	- Weymouth Waters - Kitchen				
				60000000-0016-200	60000000	- Weymouth Waters - Bar				
				60000000-0016-300	60000000	- Weymouth Waters - Management				
				60000000-0018-100	60000000	- Reading Ratatouille - Kitchen				
				60000000-0018-200	60000000	- Reading Ratatouille - Bar				
				60000000-0018-300	60000000	- Reading Ratatouille - Management				
				60000000-0020-100	60000000	- Melrose Meals - Kitchen				
				60000000-0020-200	60000000	- Melrose Meals - Bar				
				60000000-0020-300	60000000	- Melrose Meals - Management				
				60000000-0022-100	60000000	- Lowell Lake Lane - Kitchen				
				60000000-0022-200	60000000	- Lowell Lake Lane - Bar				
				60000000-0022-300	60000000	- Lowell Lake Lane - Management				
				60000000-0024-100	60000000	- Arlington Alley - Kitchen				
				60000000-0024-200	60000000	- Arlington Alley - Bar				
				60000000-0024-300	60000000	- Arlington Alley - Management				

~ 24 Separate GL Account Combinations

# Power of Dimension

sage Intacct



## Where Sage Intacct Is Great Fit for GP Customers



Multi everything, multi entity with scale

Integration with line of business applications

Real-time visibility to operations

If using Salesforce

Ideal verticals

## Get Current with Modern “Born-in-Cloud” SaaS Solution



- Born in the cloud in 1999 as a true cloud solution, focused exclusively on Finance professionals
- Forget the limitations of Microsoft Dynamics GP. With Sage Intacct, you can change your business processes without the headaches
- Scale up and reduce the cost of compliance with consistent workflows.
- Meet all of your reporting needs regardless of the complexity of ownership structures.
- Employees can be productive from any location, whether they are entering data, accessing information, or approving transactions.
- Auditors, board members, or other remote stakeholders can participate in audits, financial reviews, and approval workflows.
- Right from your smartphone or tablet, you can access the metrics and reports you need – anytime, anywhere.



# Visibility into Financials and Operations

sage Intacct

- Get a real-time picture of your financial performance – right down to the granular details.
- See your financial information your way, without resorting to other tools or complex charts of accounts.
- Create real-time, self-service stakeholder dashboards and reports for a holistic view of business performance that include financial, operational, and external data without any programming knowledge.

## API Integrations – ISVs, Sage Intacct Marketplace Partners



- Get the rich accounting and finance functionality you need from the AICPA's preferred provider.
- Keep working with the other business applications (like Salesforce.com) that meet your needs.
- Skip expensive software bundles that give you additional modules you won't use.
- Enjoy the convenience of "point-and-click" integration with popular applications – no writing and maintaining your own code.

# Total Cost of Ownership



- You can reduce the TCO of your financial management system by eliminating hardware costs and reducing software and IT expenses.
- Say goodbye to installing, maintaining, and upgrading your financial management applications - no more dependence on scarce IT resources. With Intacct, you focus on business, not technology.
- Reduce your risk with enterprise-class security, backups, and disaster recovery – all included.
- Flexible pay-as-you-go per-user subscriptions mean you don't see surprises or hidden costs.

## RECAP – TOP 10 REASONS TO CONSIDER SAGE INTACCT



1. Dimensions
2. Real-time visibility
3. Multi-entity – intercompany, consolidations
4. API
5. Tailoring & customizing
6. Industry functionality such as NFP, Contracts, Revenue Recognition, Projects, Audit Trail and GAAP Compliance/HIPAA Compliance, Budgeting & Planning
7. “Born in the cloud” – no infrastructure, scalability, access anywhere
8. AICPA – only preferred provider
9. Customer Satisfaction
10. Innovation

# CUSTOMER STORY

## Overview & Background

- Franchise organization with 100s of locations and entities
- Needed a scalable cloud-based ERP to support and sustain their growing business
- The accounting team needed an ERP that had strong capabilities for multi-entity, intercompany, reporting, and solid core accounting processes
- After seeing several demos of various cloud ERP solutions, Sage Intacct was selected for the software's scalability, built-in multi-entity capabilities, dynamic reporting and simpler third party integrations through the API.

## Out with the Old Technology

- Microsoft Dynamics GP
- Management Reporter
- Binary Stream Multi-Entity Management
- Excel reports
- Highly customized integrations with .NET applications and SQL code

## In with the Sage Intacct native capabilities:

- GL, AR, AP, Purchasing
- Dashboards
- Financial Reports
- API 1<sup>st</sup> technology

# QUESTIONS AND ANSWERS



## RSM US LLP

+1 800 274 3978

[www.rsmus.com](http://www.rsmus.com)

This document contains general information, may be based on authorities that are subject to change, & is not a substitute for professional advice or services. This document does not constitute audit, tax, consulting, business, financial, investment, legal or other professional advice, & you should consult a qualified professional advisor before taking any action based on the information herein. RSM US LLP, its affiliates & related entities are not responsible for any loss resulting from or relating to reliance on this document by any person. Internal Revenue Service rules require us to inform you that this communication may be deemed a solicitation to provide tax services. This communication is being sent to individuals who have subscribed to receive it or who we believe would have an interest in the topics discussed.

RSM US LLP is a limited liability partnership & the U.S. member firm of RSM International, a global network of independent audit, tax & consulting firms. The member firms of RSM International collaborate to provide services to global clients, but are separate & distinct legal entities that cannot obligate each other. Each member firm is responsible only for its own acts & omissions, & not those of any other party. Visit [rsmus.com/aboutus](http://rsmus.com/aboutus) for more information regarding RSM US LLP & RSM International.

RSM, the RSM logo & *the power of being understood* are registered trademarks of RSM International Association.

© 2020 RSM US LLP. All Rights Reserved.

