

AUTOMATING LEASE ACCOUNTING IN NETSUITE USING NETLEASE



August 23, 2021

Introductions

Weston Lampe, CPA

Manager, Technology Consulting
Netgain Implementation Specialist
Denver, CO

Troy Sheehan, CPA

Manager, Technology Consulting
Lease Software Implementation Specialist
Cleveland, OH

Agenda

The New Standard



The RSM Process



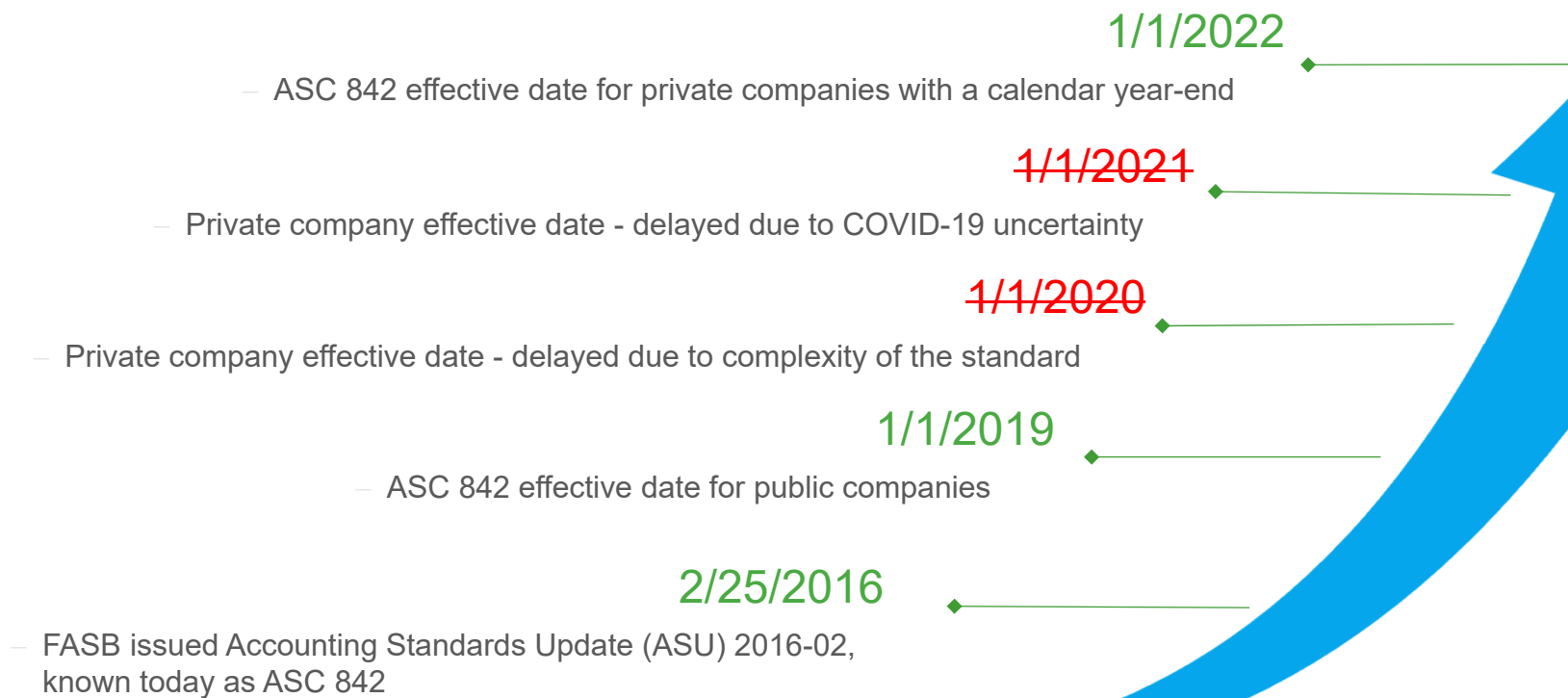
NetLease Demo











Questions & Answers



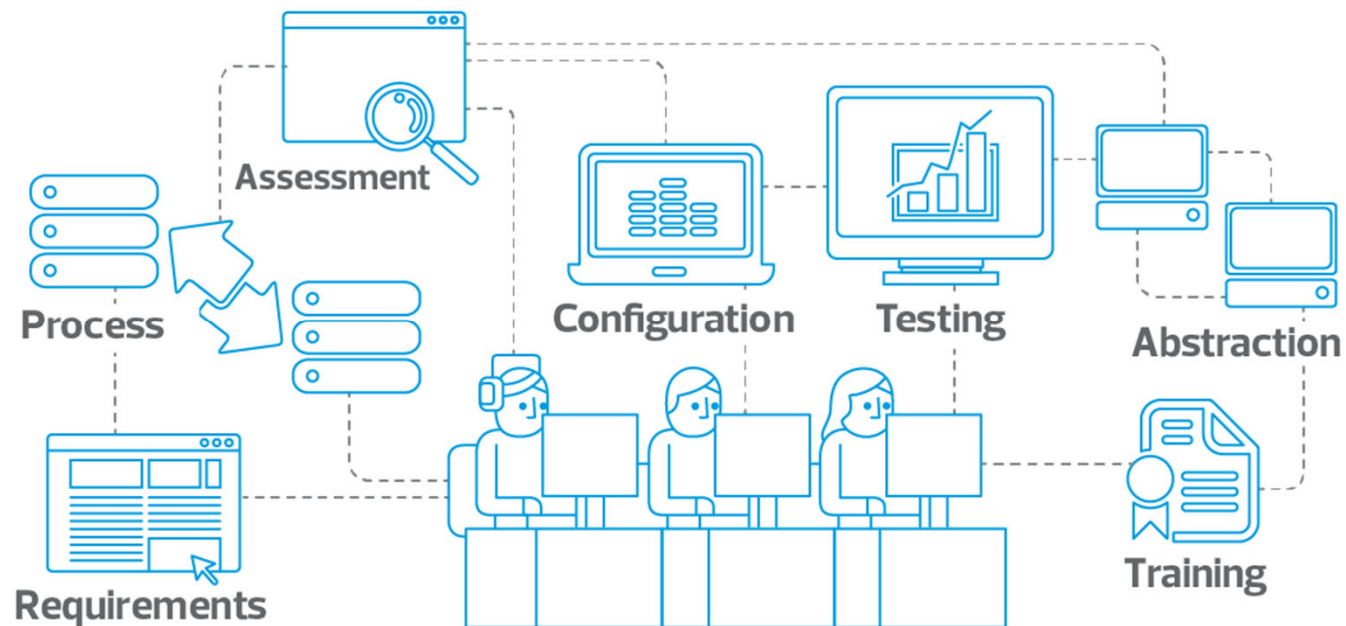
The new standard



Changes to the balance sheet

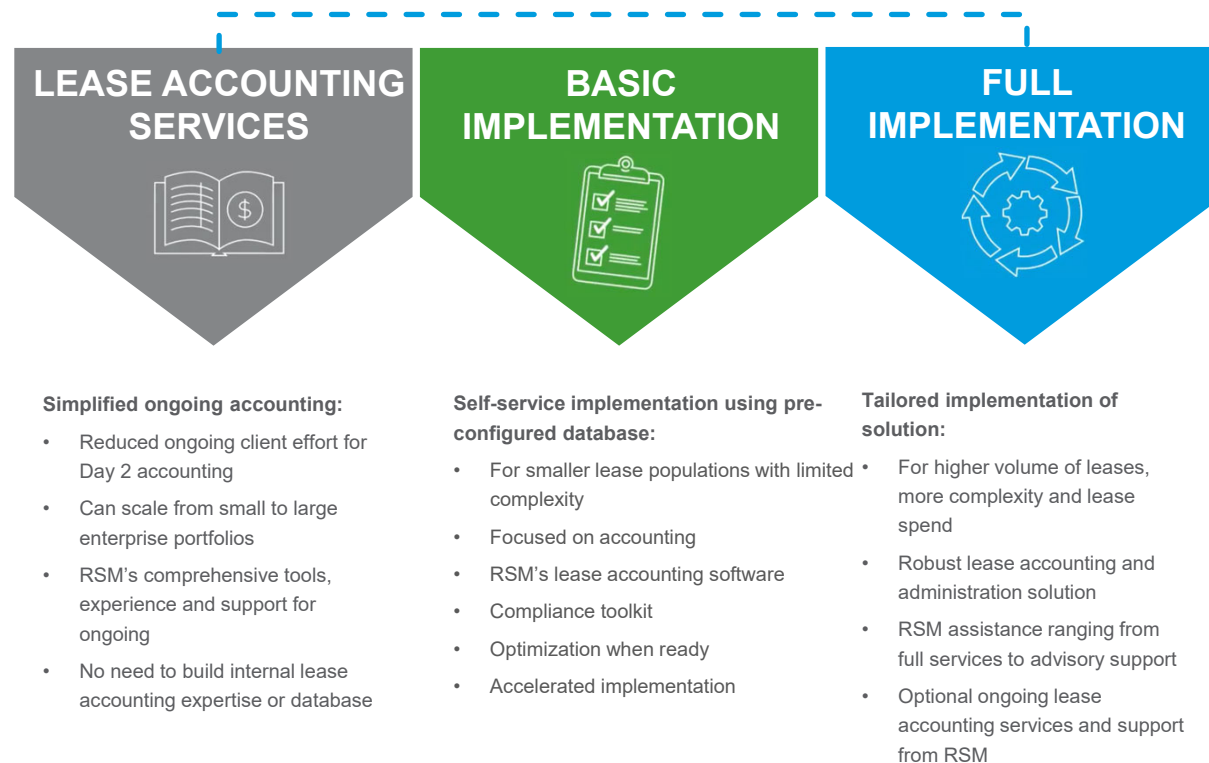
	ASC 840		ASC 842
	<i>Finance Leases</i>	<i>Operating Leases</i>	<i>All Leases</i>
Assets	 	---	   
Liabilities	\$\$	---	\$\$ \$\$\$
Off Balance Sheet Rights/Obligations	---	<div>  \$\$\$</div>	---

Compliance is complex



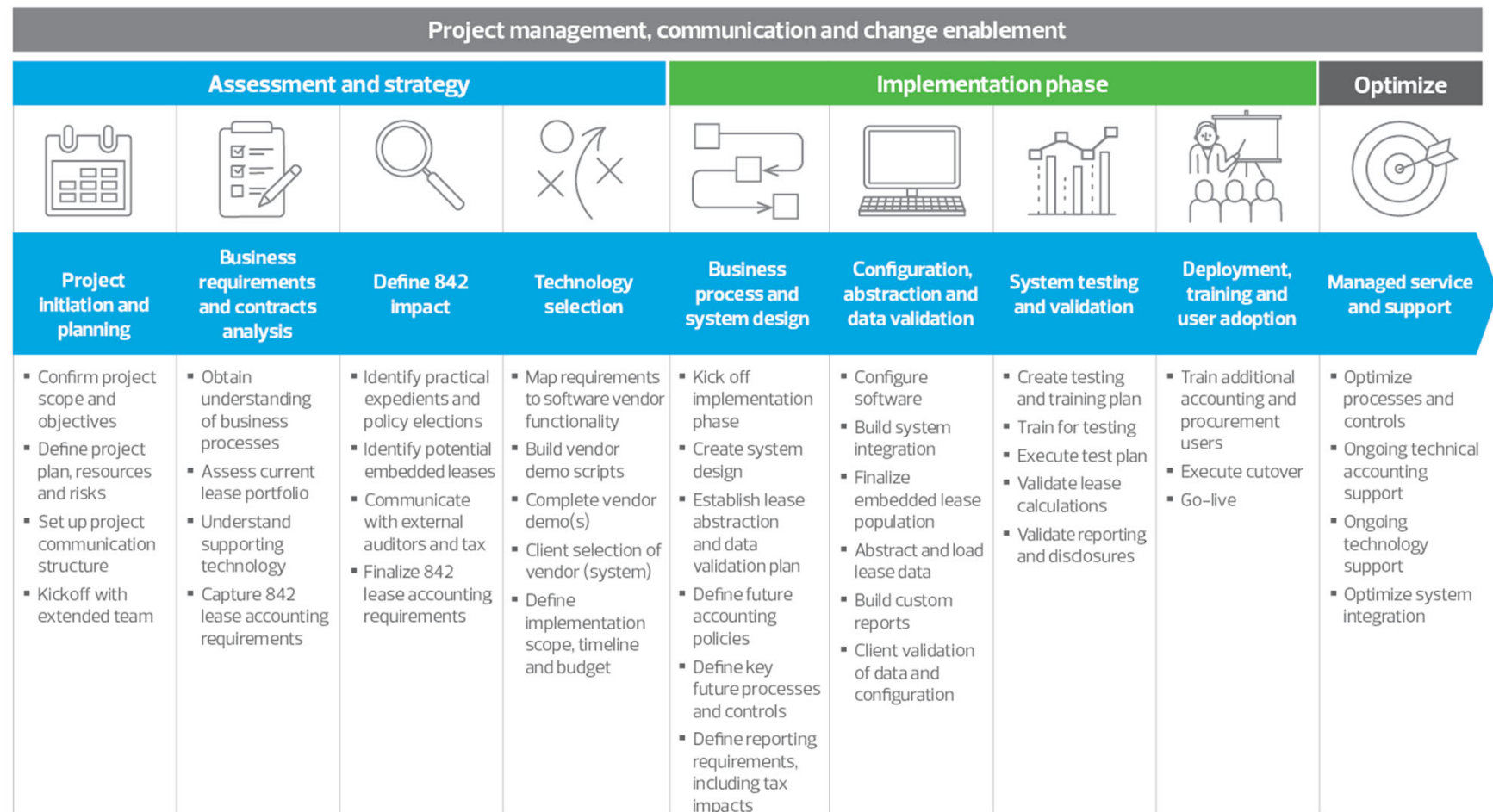
RSM's three paths to compliance

PATH TO COMPLIANCE OPTIONS

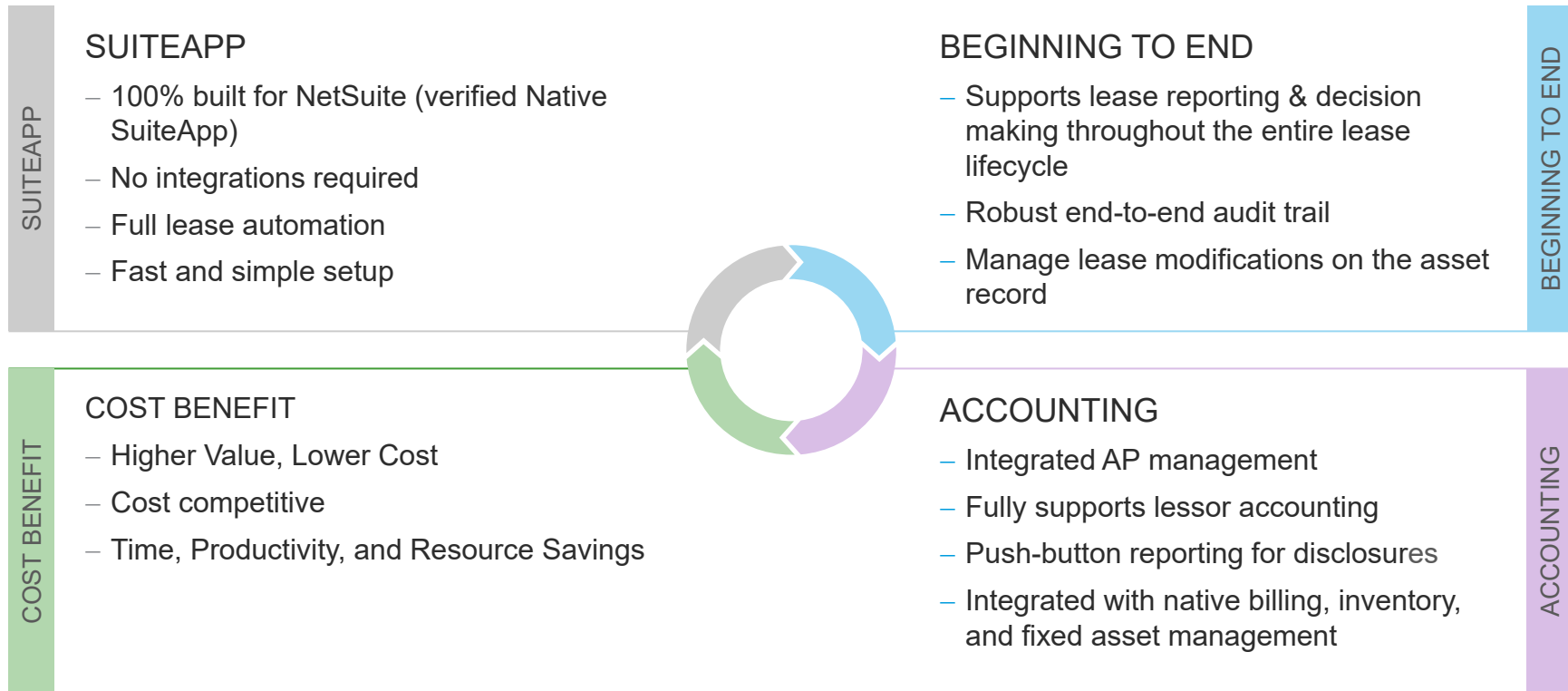


The RSM process

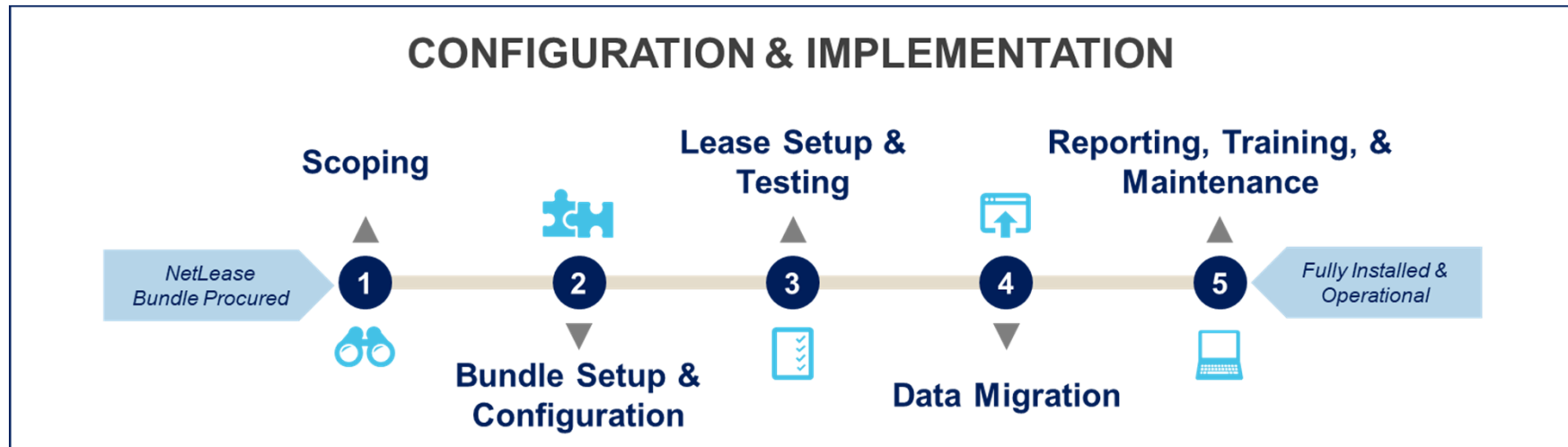
Implementation methodology and approach



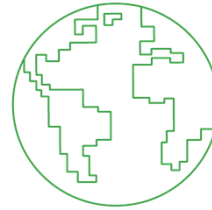
Why NetLease?



NetLease process



Our NetSuite practice



One of the largest
Global NetSuite Partners



RSM offices
in 85 U.S. cities and
4 Canadian cities



**Regionally
based NetSuite
resources**

- Certified Public Accountants
- ERP Consultants
- SuiteCloud Developers
- Project Managers



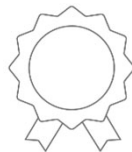
175+
NetSuite Certified Consultants



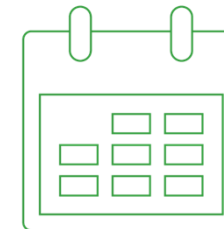
#1 NetSuite
consulting partner
in the U.S.



1,500+
NetSuite
customers



NetSuite Solution Partner of the Year
for 5 of the past 6 years.



2002
NetSuite practice
began

NETLEASE DEMONSTRATION



Demo agenda

Topic	Points
NetLease Bundle	<ul style="list-style-type: none">• Downloading the bundle
Dashboard	<ul style="list-style-type: none">• Lease portfolio at a glance
System Setup	<ul style="list-style-type: none">• Transition selections• Accounting settings• System settings• System features• Lease types
Entering a new lease	<ul style="list-style-type: none">• Primary information• Schedule information• Amortization schedules• Accounting• Related records

Demo agenda

Topic	Points
Journal Entries	<ul style="list-style-type: none">• Initial balance• Monthly amortization
Modifications & Early Terminations	<ul style="list-style-type: none">• Modifying a lease
AP Management	<ul style="list-style-type: none">• Vendor bill integration
Reporting	<ul style="list-style-type: none">• Administrative reports• Disclosure reports

QUESTIONS AND ANSWERS

Closing comments

KEY CONSIDERATIONS:

- Most companies underestimate the level of effort, complexity, resource requirements, and timeline for adoption
- Lack of centralized lease/contract databases will likely increase the effort and timeline for adoption

RESOURCES:

- [RSM Lease Accounting Resource Center](#)
- Your RSM NetSuite Contacts
- Weston Lampe weston.lampe@rsmus.com
- Troy Sheehan troy.Sheehan@rsmus.com
- RSM provide follow up information on how to set up a tailored demo with RSM and NetLease

THANK YOU FOR
YOUR TIME AND
ATTENTION



RSM US LLP

Address

City

Phone

+1 800 274 3978

rsmus.com

This document contains general information, may be based on authorities that are subject to change, and is not a substitute for professional advice or services. This document does not constitute audit, tax, consulting, business, financial, investment, legal or other professional advice, and you should consult a qualified professional advisor before taking any action based on the information herein. RSM US LLP, its affiliates and related entities are not responsible for any loss resulting from or relating to reliance on this document by any person. Internal Revenue Service rules require us to inform you that this communication may be deemed a solicitation to provide tax services. This communication is being sent to individuals who have subscribed to receive it or who we believe would have an interest in the topics discussed.

RSM US LLP is a limited liability partnership and the U.S. member firm of RSM International, a global network of independent audit, tax and consulting firms. The member firms of RSM International collaborate to provide services to global clients, but are separate and distinct legal entities that cannot obligate each other. Each member firm is responsible only for its own acts and omissions, and not those of any other party. Visit rsmus.com/aboutus for more information regarding RSM US LLP and RSM International.

RSM, the RSM logo and *the power of being understood* are registered trademarks of RSM International Association.

© 2021 RSM US LLP. All Rights Reserved.

