

NETSUITE HUMAN RESOURCES

An Overview of SuitePeople and Beyond

11/17/2020

Agenda

Introductions



NetSuite & SuitePeople Overview



Human Resources



Performance Management



Payroll



Questions & Answers



The RSM Team

**Deanna Vaughan**

Supervisor, Technology Consulting
Bellevue, WA

- NetSuite Certified Consultant with 7 years of experience in NetSuite.

Deanna.Vaughan@rsmus.com

**Mark Borrelli**

Director, Pre-sales
Charlotte, NC

- NetSuite solution consultant with 15 years of experience in ERP & CRM software.

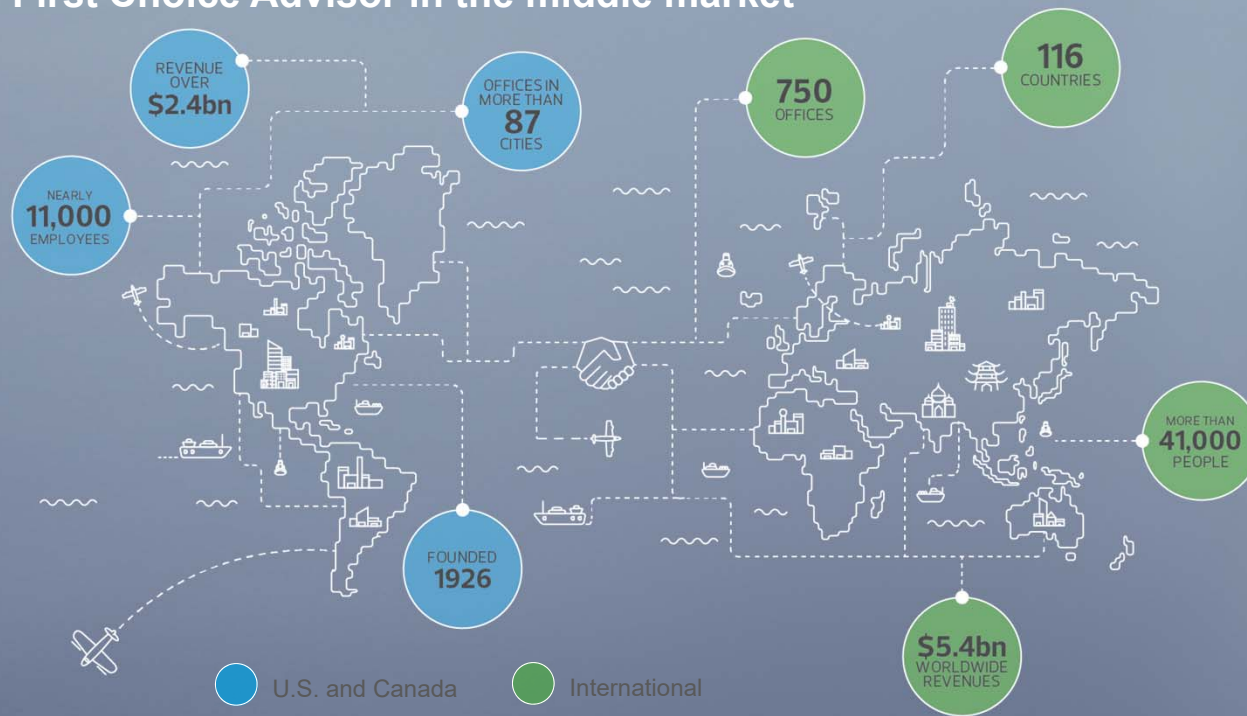
Mark.Borrelli@rsmus.com

Two vertical bars, one green and one blue, are positioned on the left side of the slide.

RSM & ORACLE NETSUITE OVERVIEW

RSM overview

Fifth largest audit, tax and consulting firm in the U.S.
First Choice Advisor in the middle market



* RSM US LLP is a limited liability partnership and the U.S. member firm of RSM International, a global network of independent audit, tax and consulting firms. The member firms of RSM International collaborate to provide services to global clients, but are separate and distinct legal entities that cannot obligate each other. Each member firm is responsible only for its own acts and omissions, and not those of any other party. Visit rsmus.com/aboutus for more information regarding RSM US LLP and RSM International.

© 2020 RSM US LLP. All Rights Reserved.



RSM consulting overview

194 partners/
principals



Leading provider of **technology, risk, financial, transaction and business consulting services - incorporating deep industry expertise** - to middle market leaders



\$597M
in revenue
in FY19

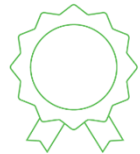
2,300+
clients



More than **3,000**
consulting professionals



600+
private equity and
portfolio clients



One of the largest
Microsoft Gold Partners
in the U.S.

More than 16%
compound annual
growth rate (CAGR)
over the past five years

6 years in a row
Consulting Magazine
Best Firms to Work For
recipient



46 languages
are spoken by
RSM Consulting
professionals



Member of the
Institute of Internal Auditors
Principal Partner Program



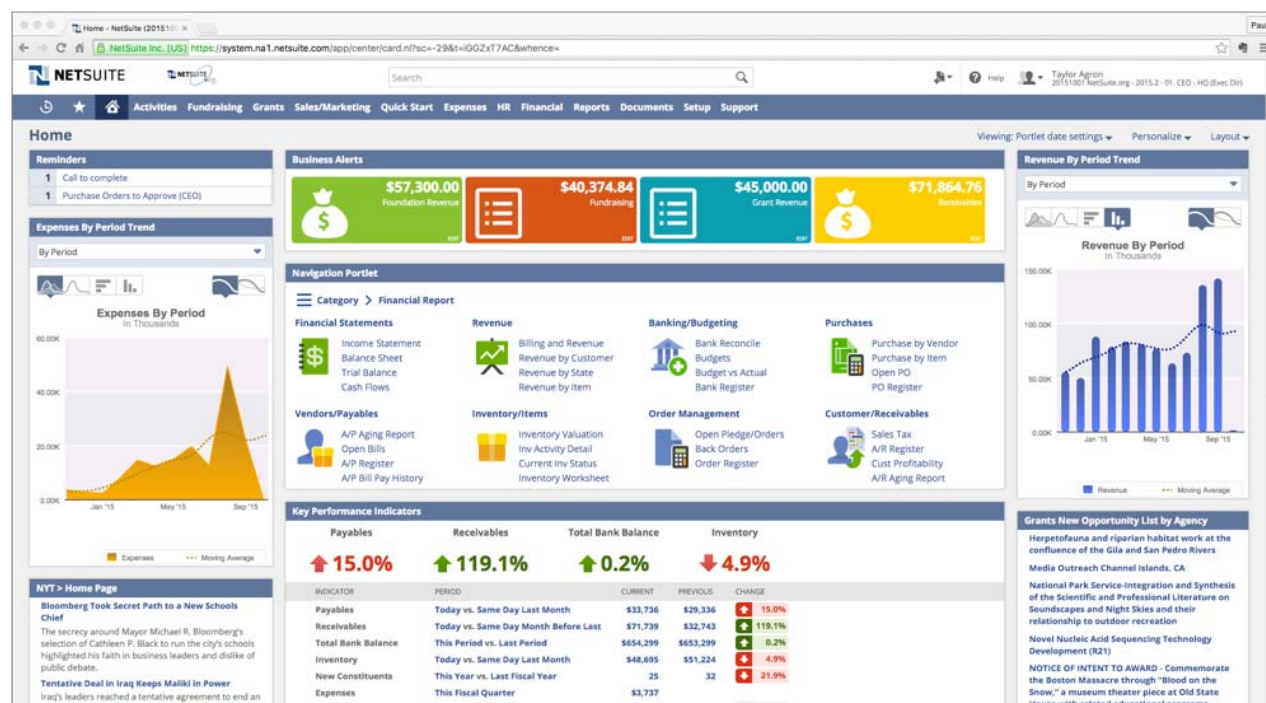
#1 NetSuite
consulting partner
in the U.S.

NETSUITE#1 CLOUD ERP

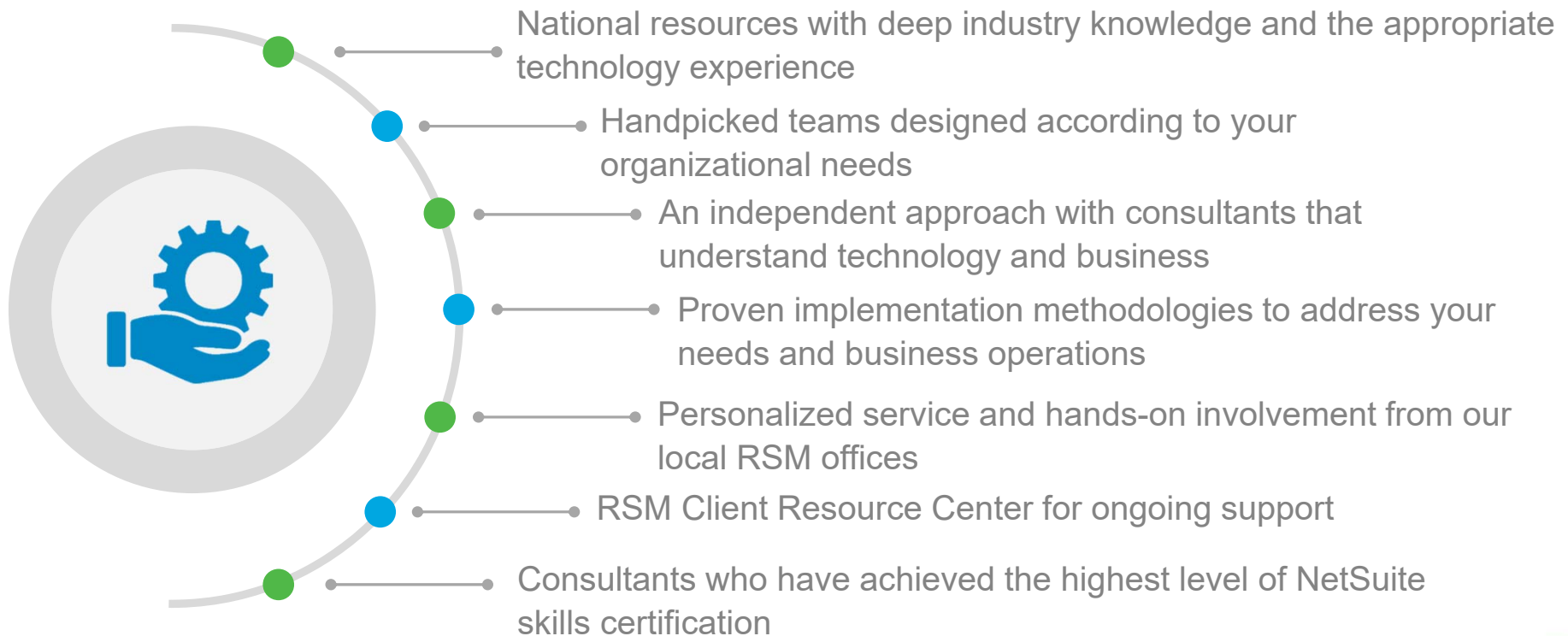


- The first cloud company
- 7,000 + employees globally
- 20,000+ organizations and subsidiaries globally
- \$1B+ revenue run rate
- Offices in 15 countries
- Now a global business unit of Oracle

Over 300+ BI Components Available “Out Of The Box”



The RSM Approach to NetSuite





SuitePeople & the NetSuite ERP

Which part of the SuitePeople Suite interests you most?

- A. HR
- B. HR & Performance Management
- C. Payroll
- D. HR, Performance Management & Payroll
- E. I don't know much about it, that's why I'm here.

Why Use SuitePeople?

■ Cross Suite Integration Benefits

- ✓ Payroll management with no per transaction fees
- ✓ Employee record management
- ✓ Track employee costs & productivity
- ✓ Manage PTO requests and PTO liability
- ✓ Real time visibility into workforce data
- ✓ Find & recognize employees
- ✓ Time-off management
- ✓ Performance management
- ✓ Workforce insights & analytics
- ✓ **Unified Solution**





SuitePeople HR Human Capital Management

SuitePeople HR – Human Capital Management

Global Employee Record

Manage employee data in a single source of truth.
Advanced Employee Permissions protect employee data.

Effective Dating

Audit trail of the employee record and the ability to view the employee record as of a specific date.

Company Directory & Org Browser

Directory and org browser are dynamically updated as employees join, leave, transfer or are promoted.

Time Tracking

Enter hours worked in individual time entries or a weekly timesheet.

Time-Off Management

Automated time-off process with a flexible rules engine for Time-Off that can accommodate the complexities of most companies.

Change Requests

Employees submit change requests directly & NetSuite provides managers more autonomy and control.

Job Management

Salary ranges provide structure for compensation decisions and supports internal compensation equity which improves employee retention and reduces turnover costs.

Kudos

Employee recognition drives employee engagement increasing employee satisfaction.

Purchase Order & Expense Reporting

Employees enter a purchase request and submit an expense report fully integrated into the ERP.

Onboarding

Mitigates the risk and cost of turnover by providing a structured onboarding process.

Compliance Management

Audit trail is left with accurate data and change reasoning to meet compliance requirements.

Job Requisition Tracking

Ensure consistent use of descriptions over time, develop headcount budgets and integrate with Applicant Tracking System.

Health & Safety

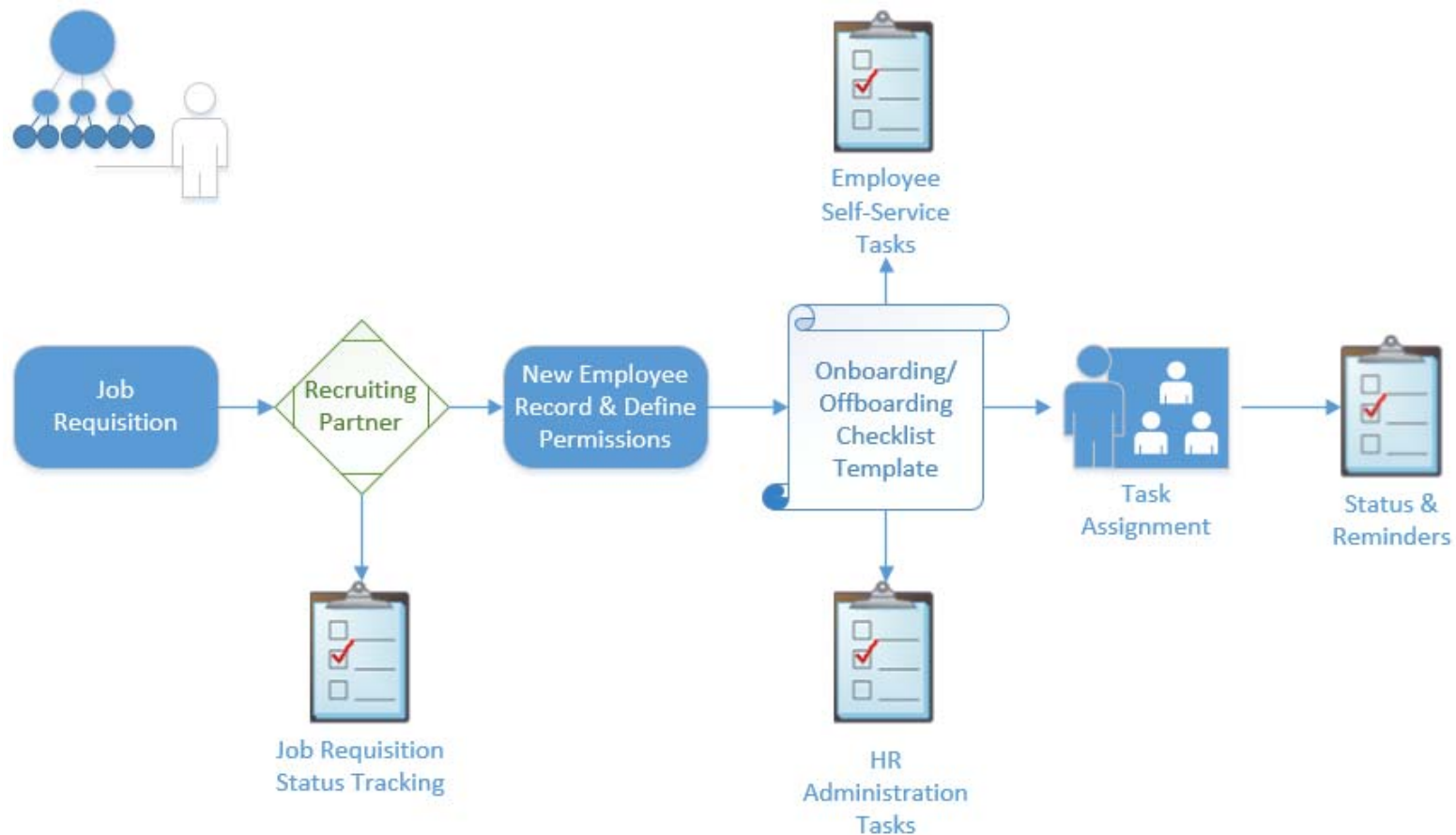
Documents workplace incidents and ensures regulatory compliance by capturing the requisite data for generating OSHA reports.

Employee Center

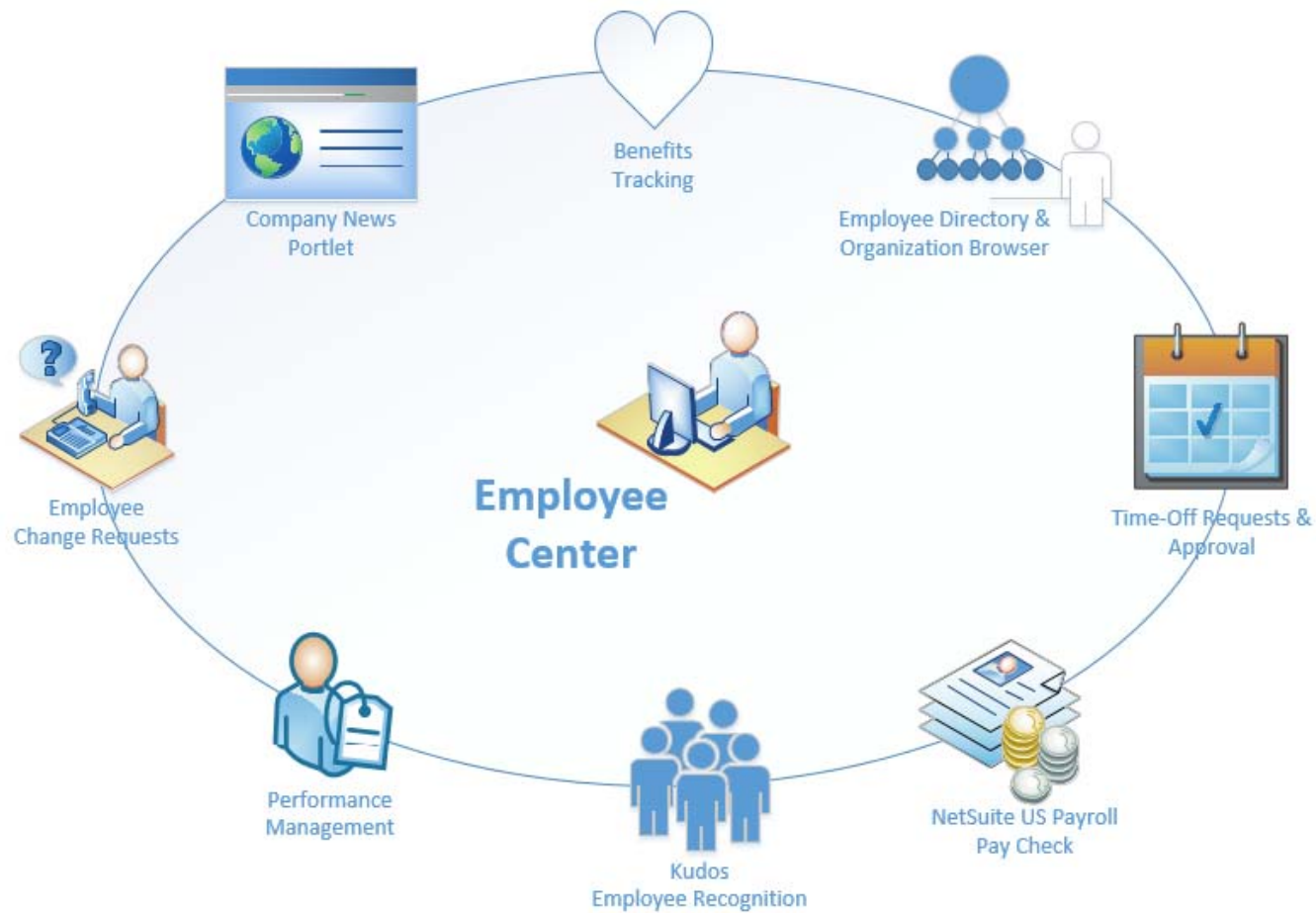
Employee dashboard and separate Manager dashboard as single gateway for communication & access to the information they need.

80+ Pre-built HR Reports & Analytics

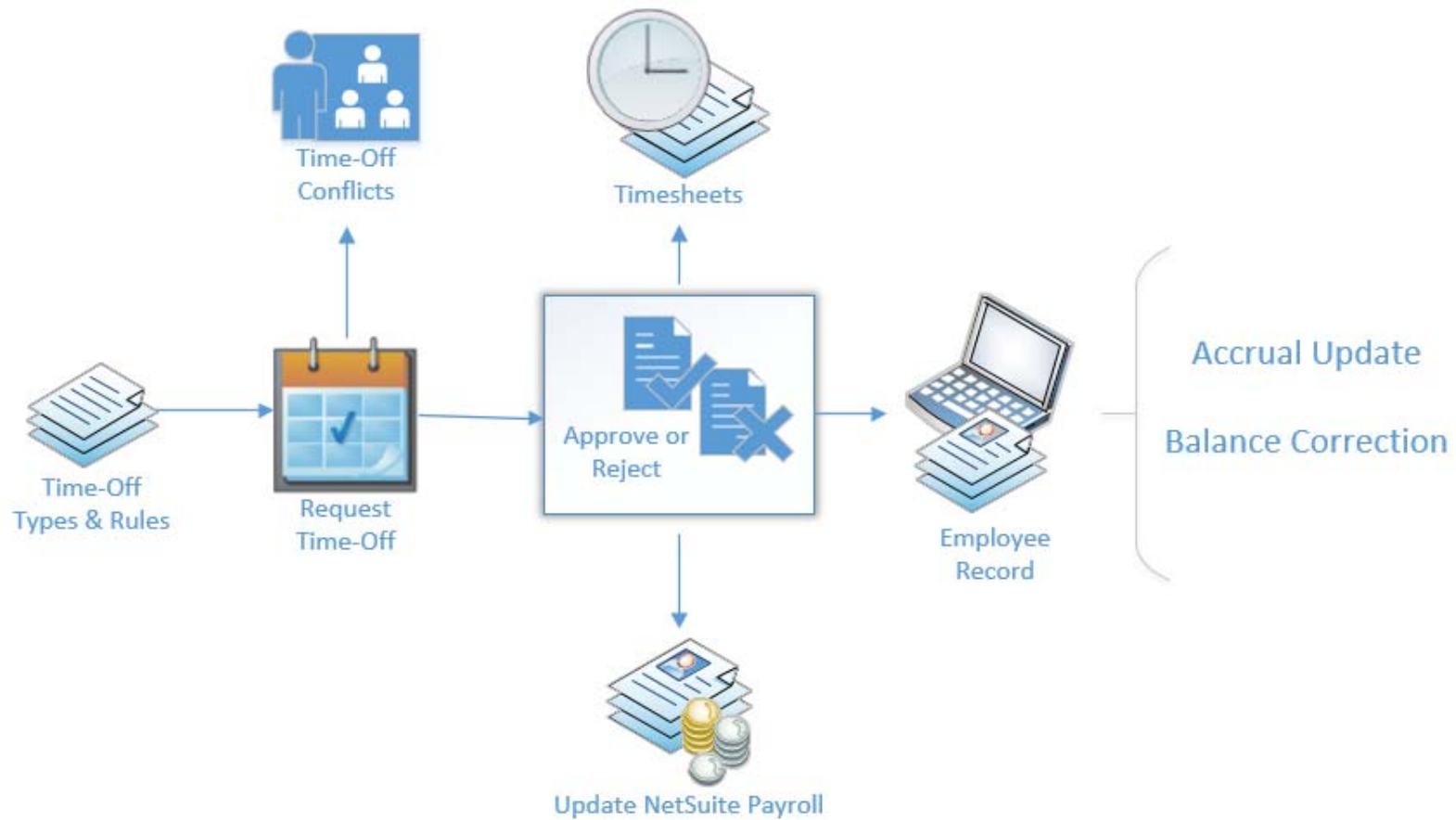
Employee Hire Process, Onboarding & Offboarding



Employee & Manager Self Service



Time-off Management



Security of Private Information

Advanced Employee Permissions

Granular Field by Field Access Control

Administrator Role – No Employee Access



Performance Management

What system do you use for Performance Management?

- A. Nothing
- B. Spreadsheets & Word Docs
- C. A separate application, but we want to switch.
- D. We try, but have not been successful at implementing anything on a regular basis.

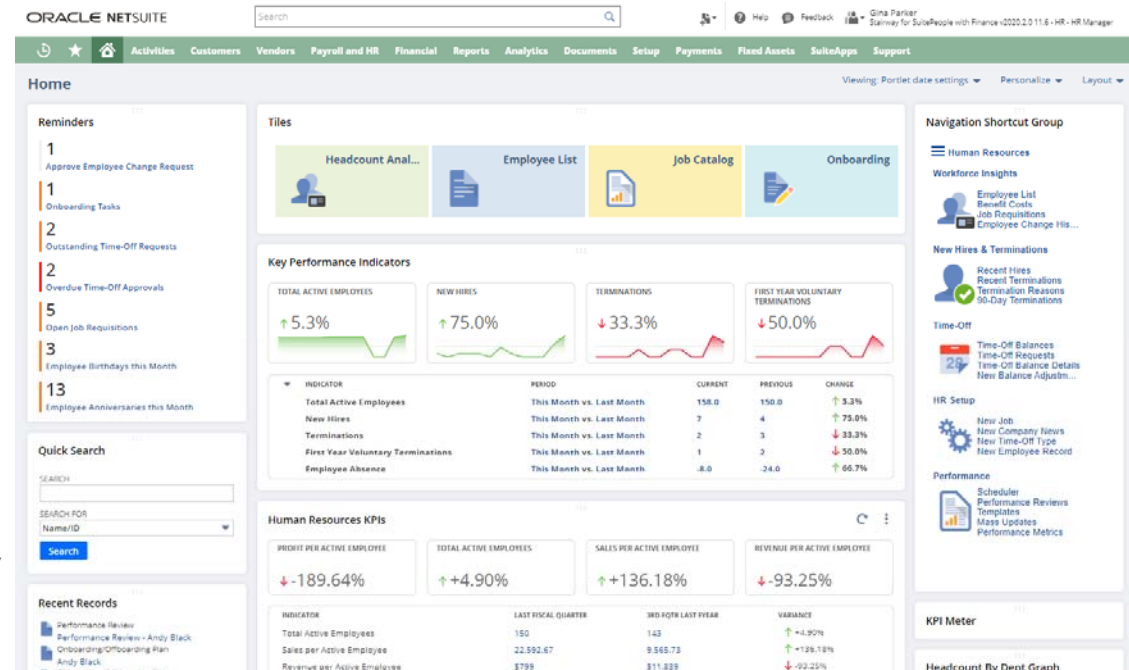
Performance Management

■ Goal Management

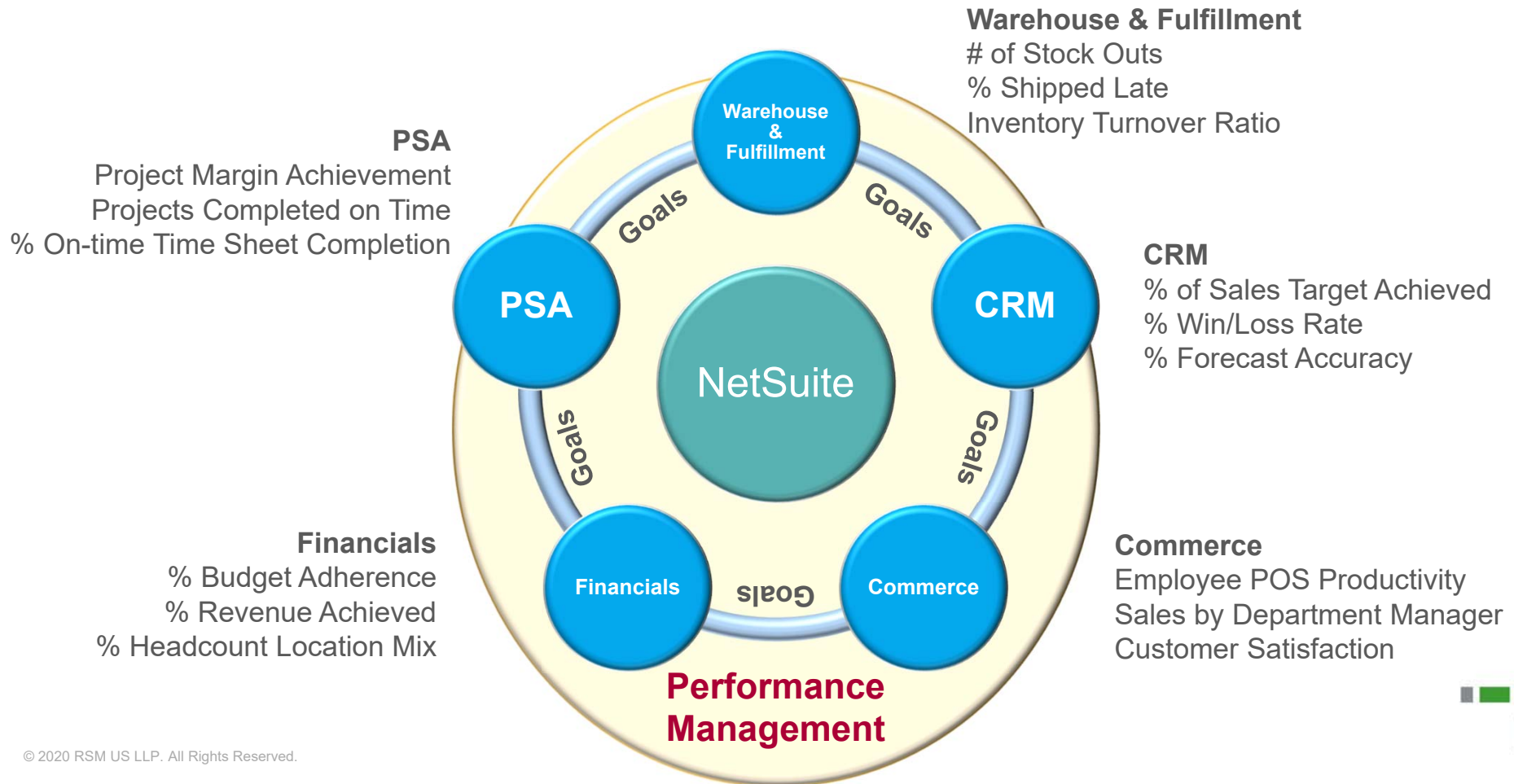
- ✓ Employee ownership of goals
- ✓ Manager approval and collaboration
- ✓ Performance metrics
- ✓ Reporting capabilities

■ Performance Reviews

- ✓ Define performance questions and scale
- ✓ Assign reviews to employees and reviewer
- ✓ Goals integrated
- ✓ Review and approve reviews



Performance Management SuiteNess



Real-time Data from Across the Suite = SuiteNess

Real-Time Performance Metrics attach to goals

Leverage Data Visibility Related to Individual Performance

Goals Automatically Pulled into the Performance Review Including Performance Metrics



Payroll

How do you currently capture your payroll details in NetSuite?

- A. Enter a summary Journal Entry to capture expenses & liabilities only.
- B. Enter a detailed Journal Entry that captures all expense & liability details by employee.
- C. We have a separate payroll system integrated with NetSuite.
- D. We already use NetSuite Payroll.

SuitePeople – U.S. Payroll

- Fully integrated into SuitePeople HR and Accounting modules.
- All employer and employee payroll taxes paid.
- Form submission to tax authorities.
- Direct deposit included, with printed checks available.
- Supports all federal and state tax, including over 10,000 local jurisdictions.
- Tax law changes monitored and accounted for.
- State tax reciprocity and local tax sharing rules supported.
- Current and cumulative online pay statements for employees.
- Year-end W2 generation and ACA reporting

SuitePeople – U.S. Payroll



ACCURATE

Your deposits and filings are accurate and on time.



INTEGRATED

Completely integrated with NetSuite accounting. No need to re-enter payroll data, so you save time and minimize the chance of data entry errors.



SUPPORTED

Our Payroll support team is APA Certified with tenure ranging 2 to 10 years. Dedicated Payroll phone line and case submission provides assistance with payroll processing, state and federal tax notices.



SIMPLE

Our cloud-based offering shaves time off of payroll processing because there are no software programs to download, buy or install.



FLEXIBLE

NetSuite Payroll works where you do—across 50 states and local jurisdictions. And since NetSuite's platform is built in the cloud from the ground up, custom integrations are easy.



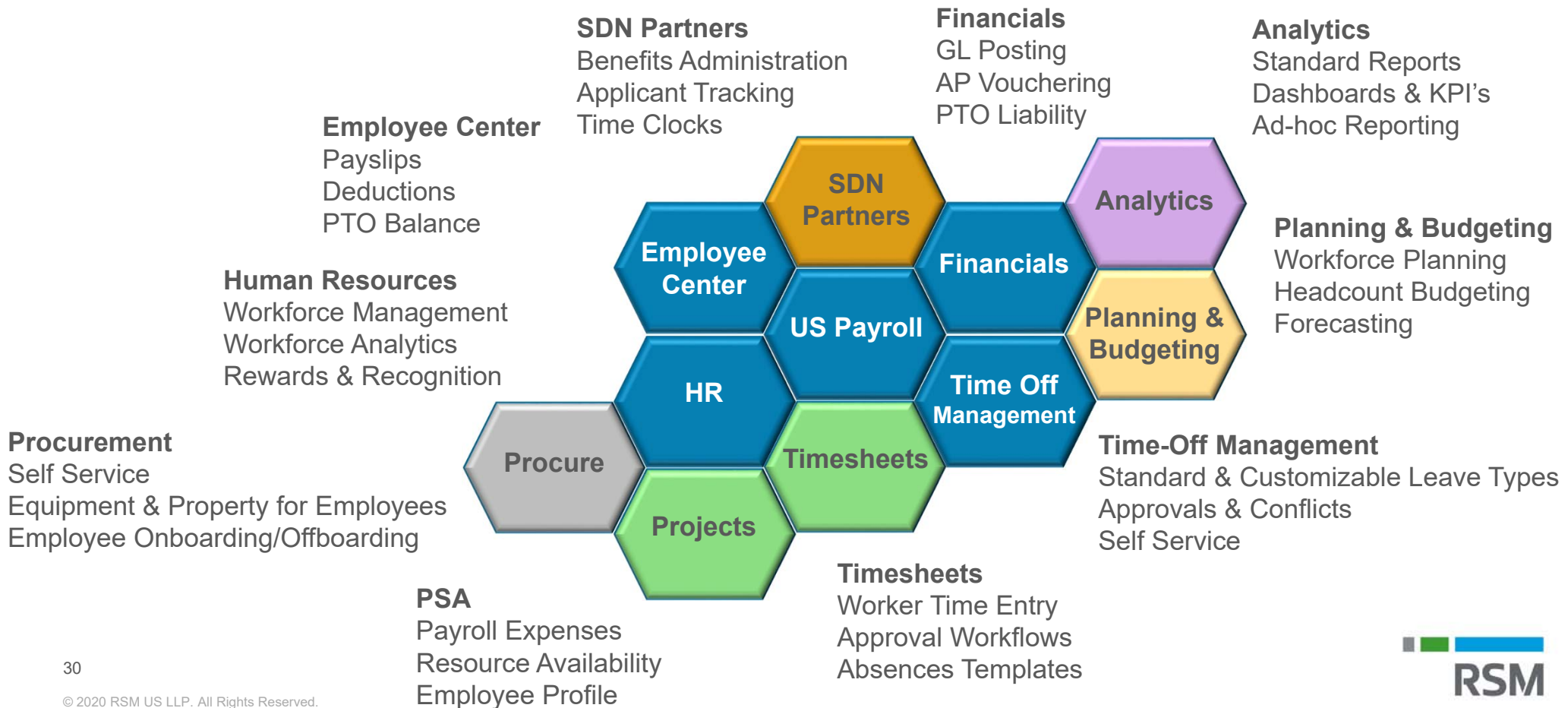
SuitePeople Demonstration

HR - Performance Management - Payroll



The Power of the Suite

SuitePeople – The TRUE Value of a Suite



SDN Partners



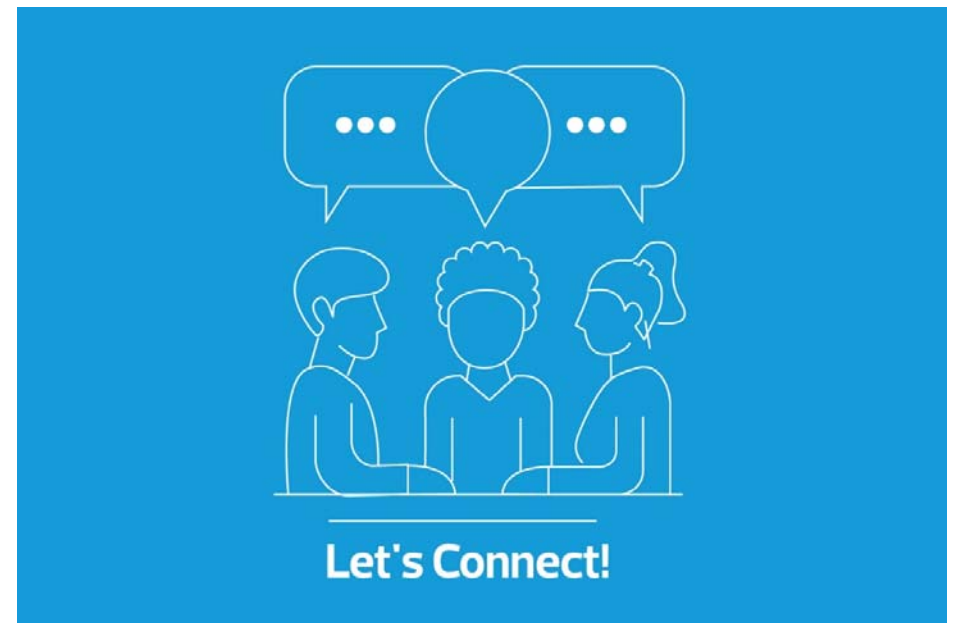
Questions & Answers

Contact your RSM representative to schedule personalize demonstrations.

Deanna.Vaughan@rsmus.com

Mark.Borelli@rsmus.com

© 2020 RSM US LLP. All Rights Reserved.



Question Ideas

- Does it matter if RSM implemented our NetSuite account?
- Can I have only one of the modules or am I required to purchase all three?
- Can use other performance management systems with NetSuite?
- If I use payroll, is there a limit on the number of off-cycle payroll runs and what are the associated fees?



RSM US LLP

Address

City

Phone

+1 800 274 3978

rsmus.com

This document contains general information, may be based on authorities that are subject to change, and is not a substitute for professional advice or services. This document does not constitute audit, tax, consulting, business, financial, investment, legal or other professional advice, and you should consult a qualified professional advisor before taking any action based on the information herein. RSM US LLP, its affiliates and related entities are not responsible for any loss resulting from or relating to reliance on this document by any person. Internal Revenue Service rules require us to inform you that this communication may be deemed a solicitation to provide tax services. This communication is being sent to individuals who have subscribed to receive it or who we believe would have an interest in the topics discussed.

RSM US LLP is a limited liability partnership and the U.S. member firm of RSM International, a global network of independent audit, tax and consulting firms. The member firms of RSM International collaborate to provide services to global clients, but are separate and distinct legal entities that cannot obligate each other. Each member firm is responsible only for its own acts and omissions, and not those of any other party. Visit rsmus.com/aboutus for more information regarding RSM US LLP and RSM International.

RSM, the RSM logo and *the power of being understood* are registered trademarks of RSM International Association.

© 2020 RSM US LLP. All Rights Reserved.